

## 1.6 Part III: Trapezium link, transverse link, track rod

### 1 - Trapezium link

- Different versions available ⇒ [page 166](#)
- Combination of different versions on same vehicle is not permitted
- Removing and installing ⇒ [page 166](#)
- Trapezium link bushes must not be renewed; renew trapezium link if bushes are damaged

### 2 - Eccentric bolt

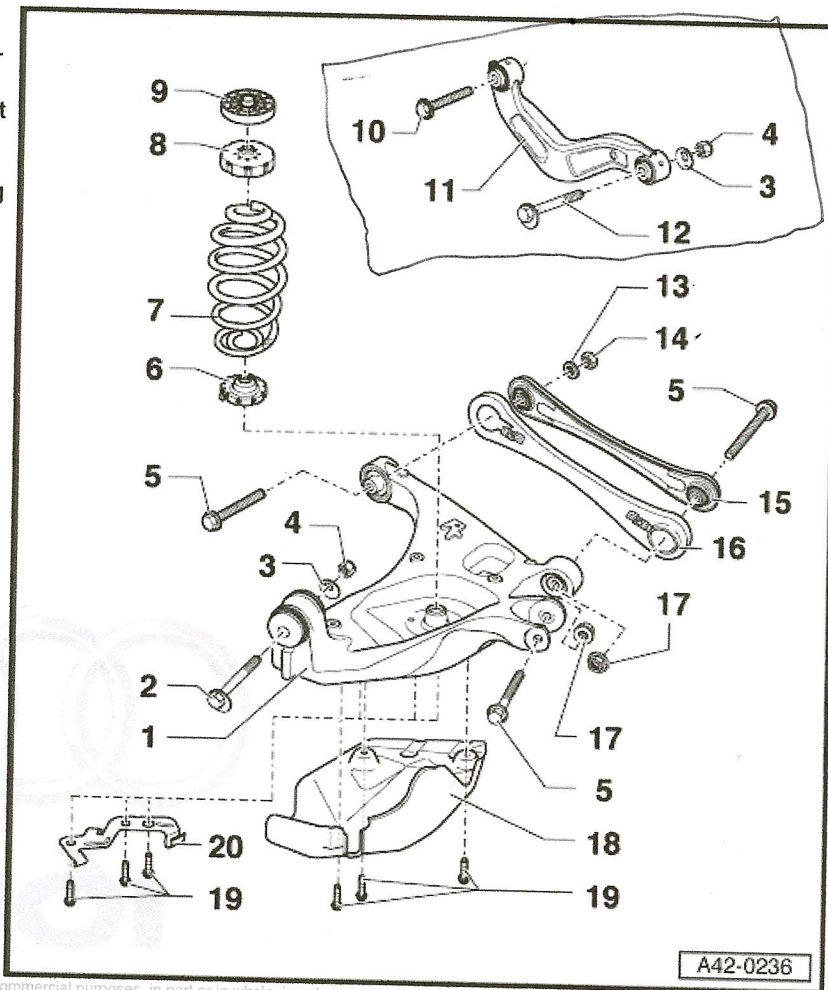
- Perform wheel alignment check if loosened ⇒ [page 236](#)
- Do not turn more than 90° in either direction (i.e. from minimum to maximum adjustment position)

### 3 - Eccentric washer

- With lug on inner bore

### 4 - Self-locking nut

- 95 Nm
- Always renew
- Suspension must be in unladen position when tightening bolt connection



Protected by copyright. Copying for private or commercial purposes, in part or in whole, is not permitted unless authorised by AUDI AG. AUDI AG does not guarantee or accept any liability with respect to the correctness of information in this document. Copyright by AUDI AG.