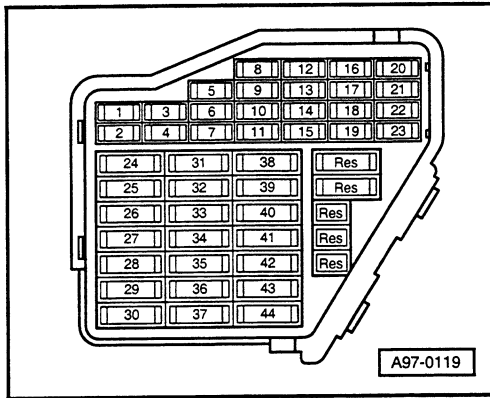


# Automatic Transmission (01V), (01L)

1999 m. y.

## Fuse Panel

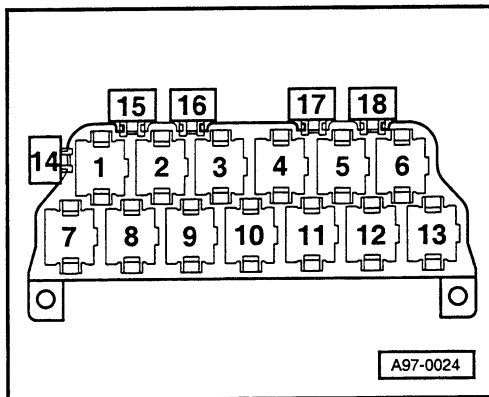


### Fuse Colors:

- 30 A - Green
- 25 A - White
- 20 A - Yellow
- 15 A - Blue
- 10 A - Red
- 7,5 A - Brown
- 5 A - Beige

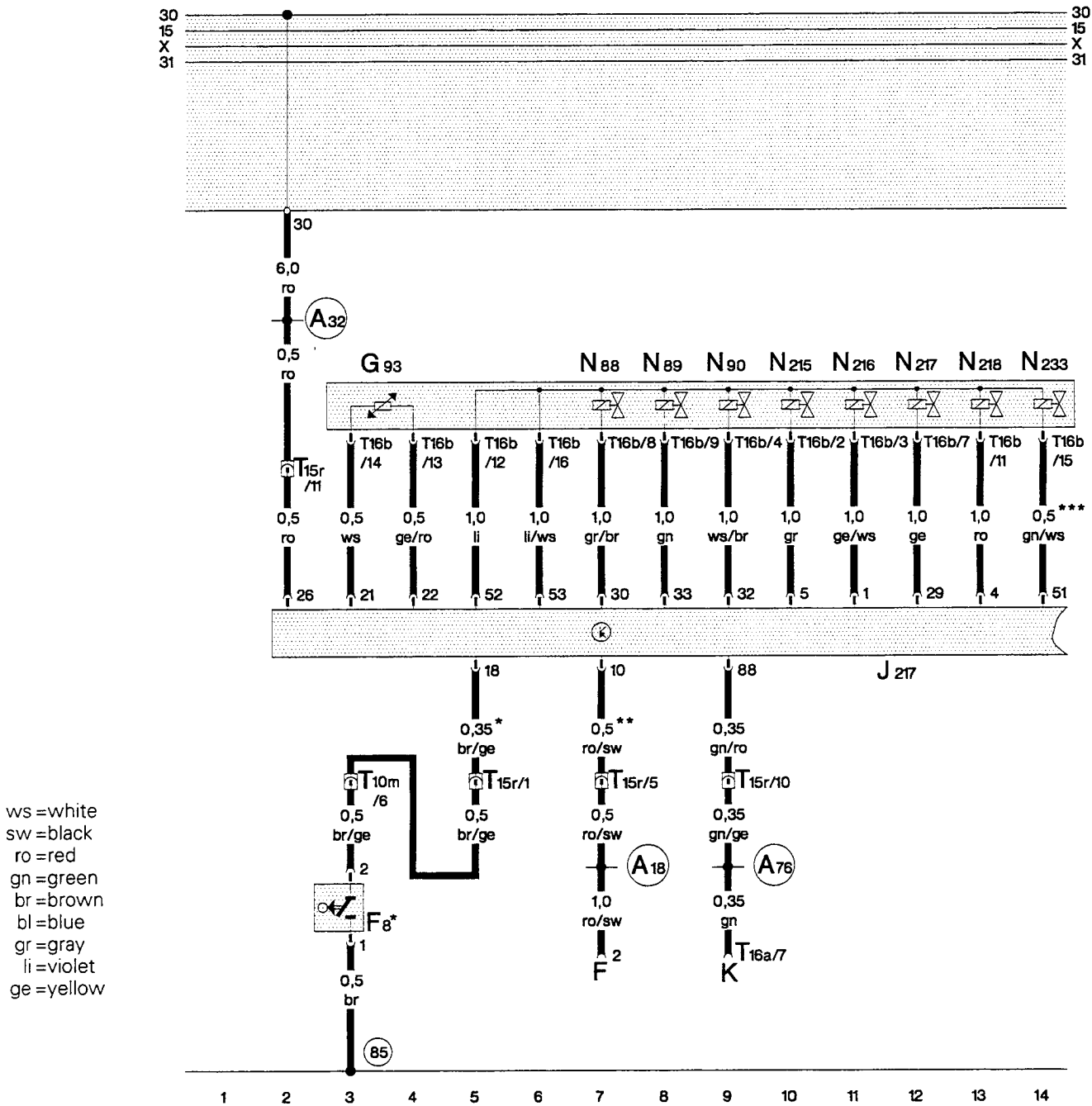
Starting with fuse position 23, fuses in the fuse holder are identified with 223 in the wiring diagram.

## 13 - Fold Relay Panel



### Relay Location:

- 4** - Starting Interlock Relay, J207



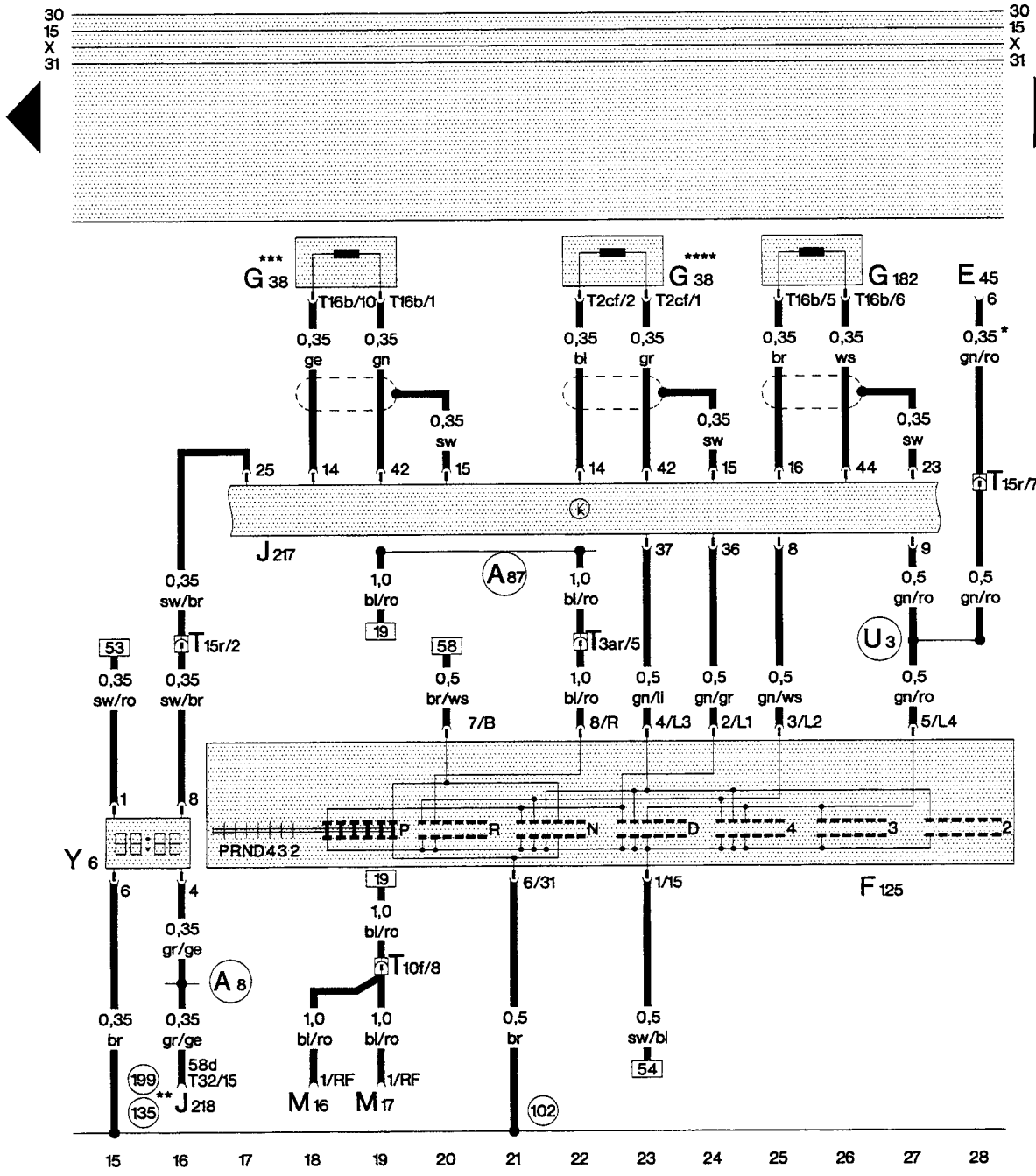
ws =white  
 sw =black  
 ro =red  
 gn =green  
 br =brown  
 bl =blue  
 gr =gray  
 li =violet  
 ge =yellow

- F - Brake Light Switch
- F 8 - Kick Down Switch
- G 93 - Transmission Fluid Temperature Sensor
- J 217 - Transmission Control Module (TCM)
- K - DLC (Data Link Connector) Rapid Data Transfer
- N 88 - Solenoid Valve 1
- N 89 - Solenoid Valve 2
- N 90 - Solenoid Valve 3
- N 215 - Pressure control valve -1- for auto. transmission
- N 216 - Pressure control valve -2- for auto. transmission
- N 217 - Pressure control valve -3- for auto. transmission
- N 218 - Pressure control valve -4- for auto. transmission
- N 233 - Pressure control valve -5- for auto. transmission
- T 10 m - Connector 10 pin, blue, connector station electronic box plenum chamber
- T 15 r - Connector 15 pin, brown, connector station A pillar, right
- T 16 a - Connector 16 pin, data link connector
- T 16 b - Connector 16 pin, on transmission

- (85) - Ground connection -1-, in engine compartment wiring harness
- (A18) - Wire connection (54), in instrument panel wiring harness
- (A32) - Plus connection (30), in instrument panel wiring harness
- (A76) - Connector (K-diagnosis wire), in instrument panel wiring harness

\* -Vehicles with mechanical throttle actuation  
 \*\* -only automatic transmission 01V  
 \*\*\* -only automatic transmission 01L

97-50445



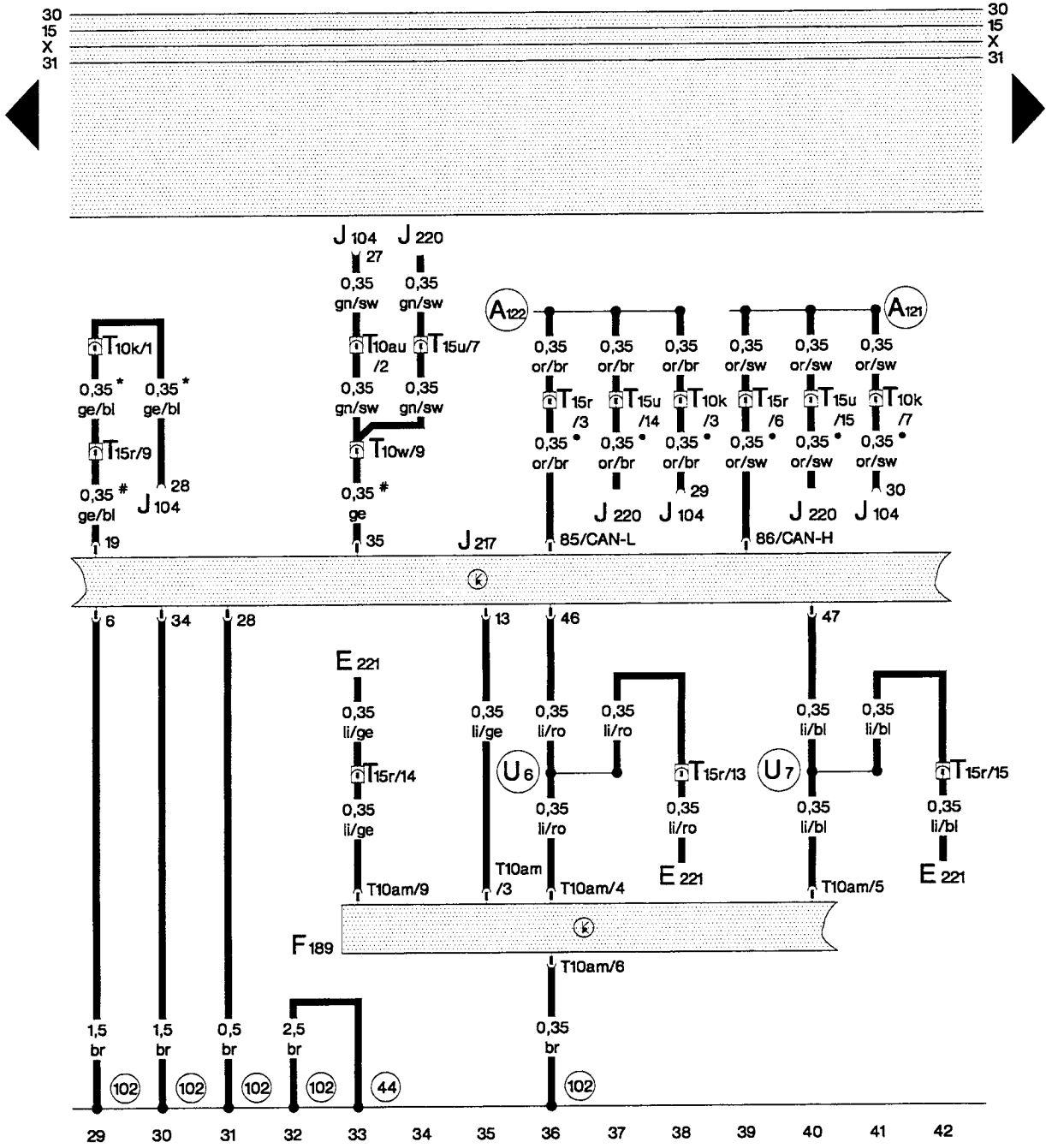
ws = white  
 sw = black  
 ro = red  
 gn = green  
 br = brown  
 bl = blue  
 gr = gray  
 li = violet  
 ge = yellow

97-50446

- E 45 -Cruise Control Switch
- F 125 -Multi-Function Transmission Range (TR) Switch
- G 38 -Transmission Vehicle Speed Sensor (VSS)
- G 182 -Sensor for transmission RPM
- J 217 -Transmission Control Module (TCM)
- J 218 -Instrument Cluster Combination Processor
- M 16 -Left Back-Up Light
- M 17 -Right Back-Up Light
- T 2 cf -Connector 2 pin, black, on transmission
- T 3 ar -Connector 3 pin, brown, connector station A pillar, right
- T 10 f -Connector 10 pin, brown, connector station A pillar, left
- T 15 r -Connector 15 pin, brown, connector station A pillar, right
- T 16 b -Connector 16 pin, on transmission
- T 32 -Connector 32 pin, blue, on instrument cluster
- Y 6 -Transmission Range (TR) Selector Lever Display

- (102) -Ground connection, in transmission wiring harness
- (135) -Ground connection -2-, in instrument panel wiring harness
- (199) -Ground connection -3-, in instrument panel wiring harness
- (A8) -Plus connection (58d), in instrument panel wiring harness (Display illumination)
- (A87) -Connector (RF), in instrument panel wiring harness
- (U3) -Wire connection -1-, in automatic transmission wiring harness

- \* -Vehicles with cruise control
- \*\* -booth is possible
- \*\*\* -only automatic transmission 01V
- \*\*\*\* -only automatic transmission 01L



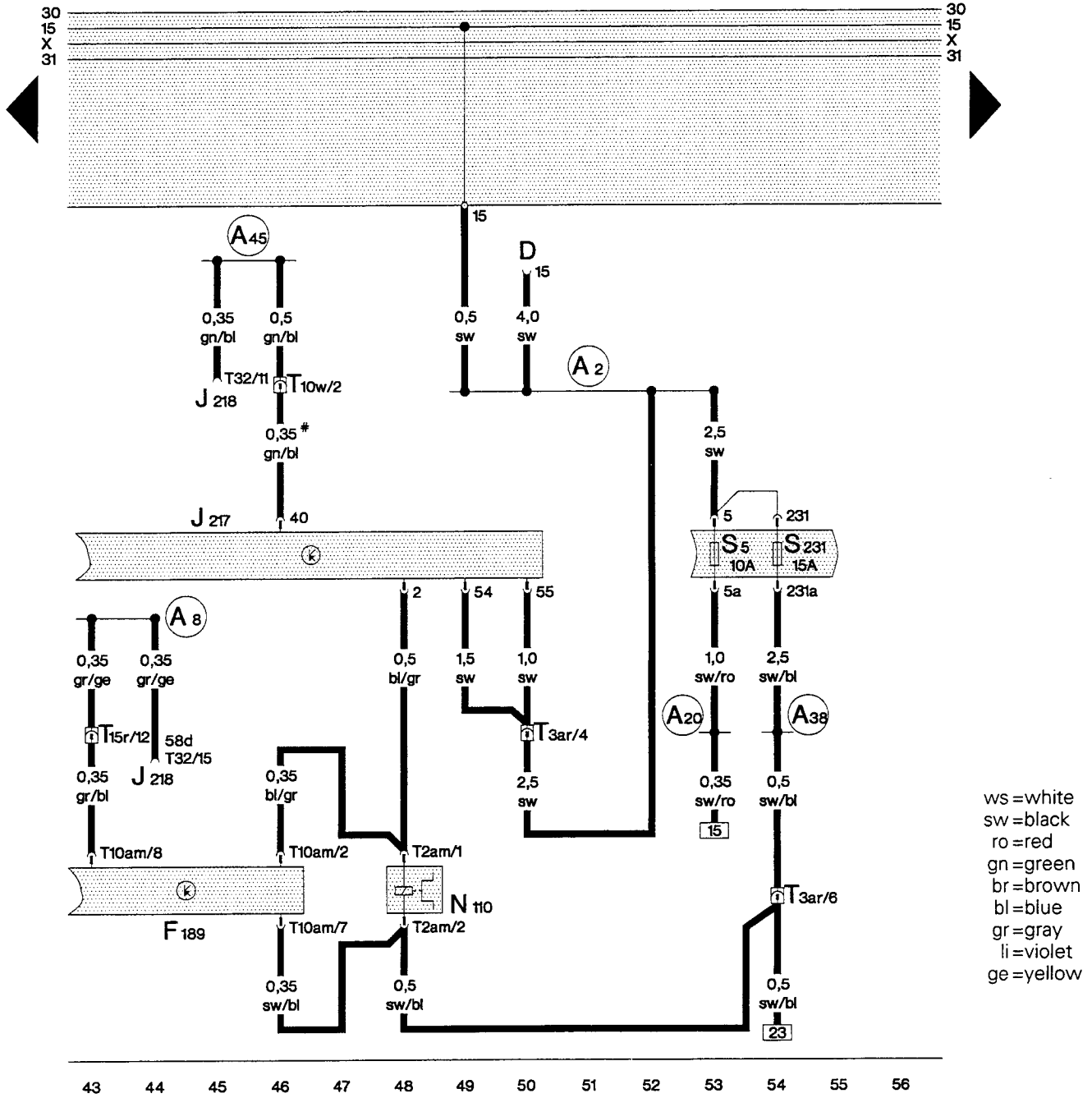
ws = white  
 sw = black  
 ro = red  
 gn = green  
 br = brown  
 bl = blue  
 gr = gray  
 li = violet  
 ge = yellow  
 or = orange

97-50447

- E 221 - Control unit in steering wheel
- F 189 - Tiptronic Switch
- J 104 - ABS Control Module (w/EDL)
- J 217 - Transmission Control Module (TCM)
- J 220 - Motronic Engine Control Module (ECM)
- T 10 k - Connector 10 pin, orange, connector station A pillar, left
- T 10 w - Connector 10 pin, blue, connector station A pillar, right
- T 10am - Connector 10 pin, on selector lever
- T 10au - Connector 10 pin, grey, connector station A pillar, right
- T 15 r - Connector 15 pin, brown, connector station A pillar, right
- T 15 u - Connector 15 pin, red, connector station electronic box plenum chamber

- (44) - Ground connection, on left A-pillar, lower part
- (102) - Ground connection, in transmission wiring harness
- (A121) - Connection (high bus) in instrument panel wiring harness
- (A122) - Connection (low bus) in instrument panel wiring harness
- (U6) - Wire connection -2-, in automatic transmission wiring harness
- (U7) - Wire connection -3-, in automatic transmission wiring harness

- -CAN-Bus
- # -Vehicles without CAN-Bus
- \* -Vehicles with front wheel drive



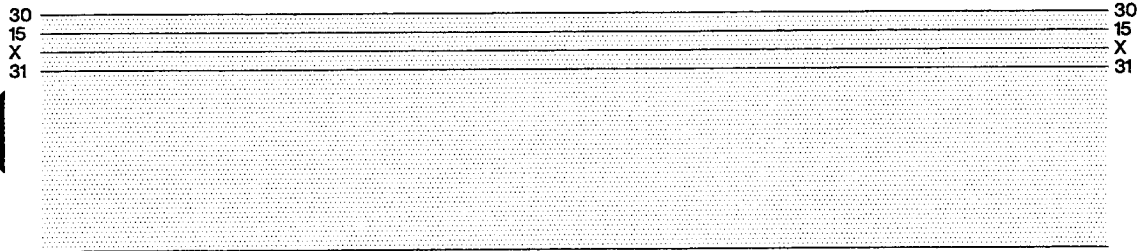
ws = white  
 sw = black  
 ro = red  
 gn = green  
 br = brown  
 bl = blue  
 gr = gray  
 li = violet  
 ge = yellow

97-50448

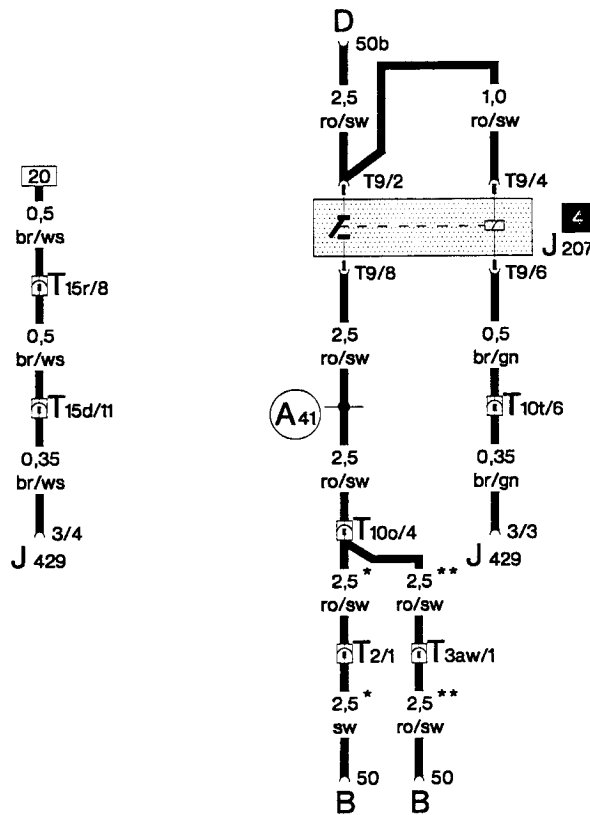
- D - Ignition/Starter Switch
- F 189 - Tiptronic Switch
- J 217 - Transmission Control Module (TCM)
- J 218 - Instrument Cluster Combination Processor
- N 110 - Shift Lock Solenoid
- S 5 - Fuse
- S 231 - Fuse
- T 2 am - Connector 2 pin, black, on selector lever
- T 3 ar - Connector 3 pin, brown, connector station A pillar, right
- T 10 w - Connector 10 pin, blue, connector station A pillar, right
- T 10am - Connector 10 pin, on selector lever
- T 15 r - Connector 15 pin, brown, connector station A pillar, right
- T 32 - Connector 32 pin, blue, on instrument cluster

- (A2) - Plus connection (15), in instrument panel wiring harness
- (A8) - Plus connection (58d), in instrument panel wiring harness
- (A20) - Wire connection (15a), in instrument panel wiring harness
- (A38) - Plus connection (15a II), in instrument panel wiring harness
- (A45) - Wire connection (RPM-signal), in instrument panel wiring harness

# - Vehicles without CAN-Bus



ws = white  
 sw = black  
 ro = red  
 gn = green  
 br = brown  
 bl = blue  
 gr = gray  
 li = violet  
 ge = yellow  
 or = orange



57    58    59    60    61    62    63    64    65    66    67    68    69    70

97-50449

- B - Starter
- D - Ignition/Starter Switch
- J 207 - Starting Interlock Relay
- J 429 - Control module for central locking
- T 2 - Connector 2 pin, grey, in engine compartment, right
- T 3 aw - Connector 3 pin, black, in engine compartment, right
- T 9 - Connector 9 pin, brown, on starting interlock relay
- T 10 o - Connector 10 pin, brown, connector station electronic box plenum chamber
- T 10 t - Connector 10 pin, orange, connector station A pillar, right
- T 15 d - Connector 15 pin, black, connector station A pillar, right
- T 15 r - Connector 15 pin, brown, connector station A pillar, right

(A41) - Plus connection (50), in instrument panel wiring harness

\* - Vehicles with 6 cylinder engine  
 \*\* - Vehicles with 8 cylinder engine