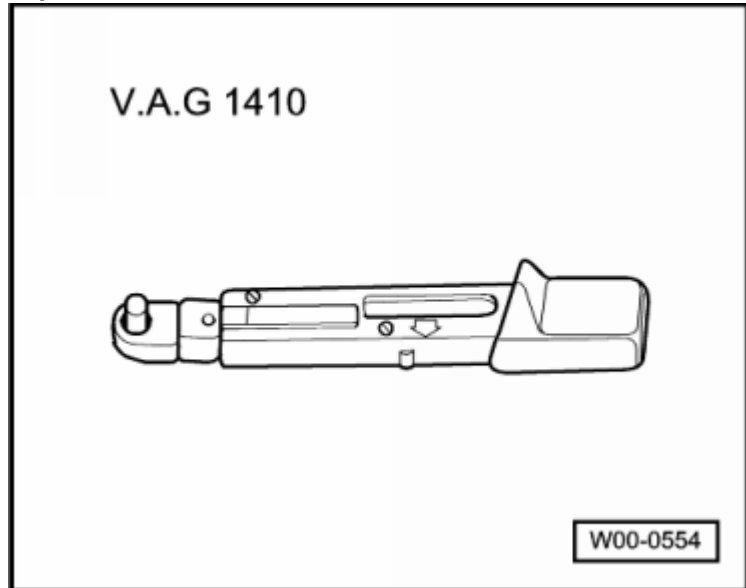
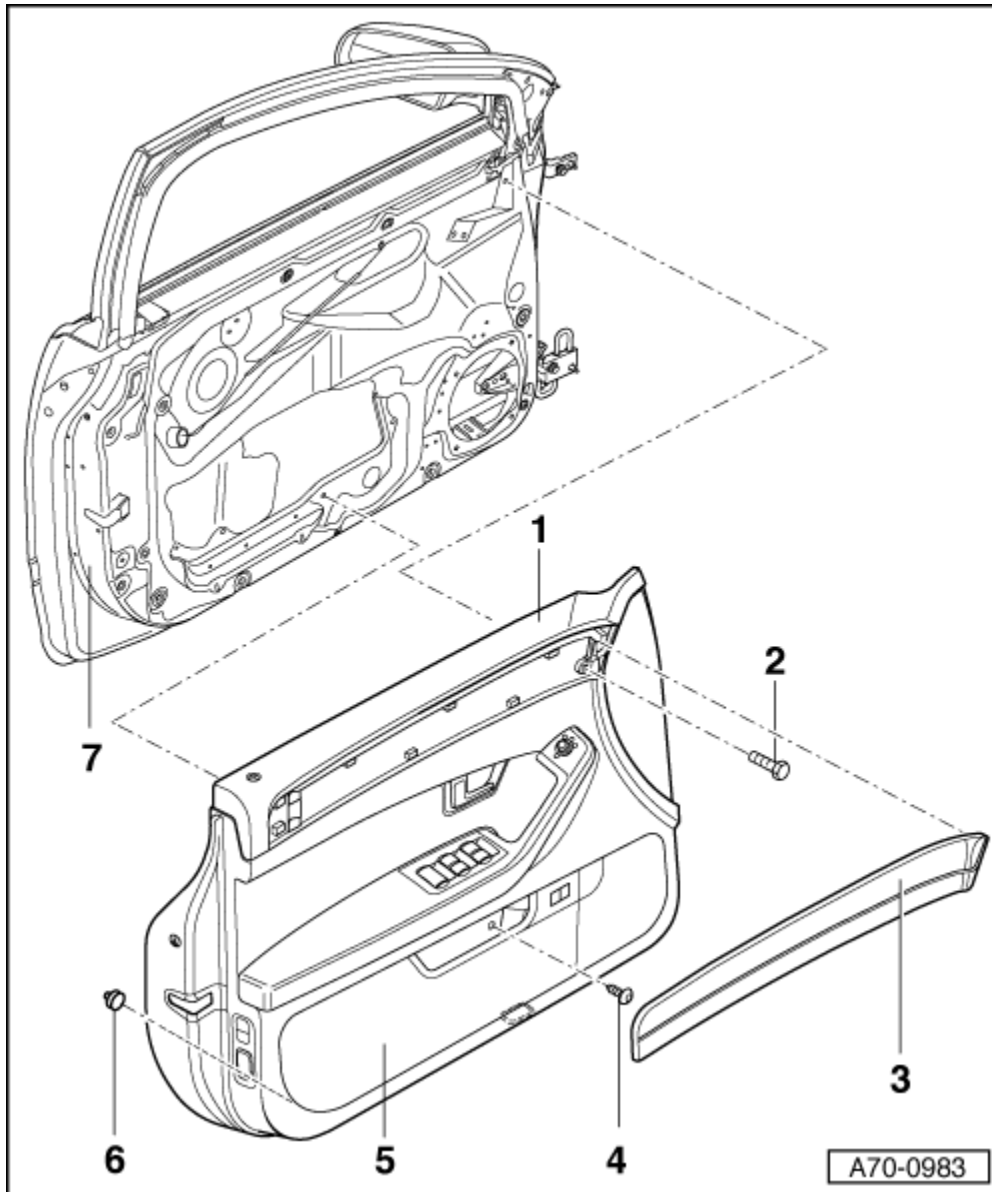


## Front door trim, removing and installing

### Special tools and workshop equipment required

- ◆ Torque wrench -V.A.G 1410-





1 - Door trim

◆ Removing

- Remove trim panel -3- → Chapter.
- Remove bolt -2-.
- Fold up hinged pocket -5-.
- Remove bolt -4-.
- Unclip door trim -1- starting from below at clips -6- (8x).
- Disengage release cable for interior door mechanism → Fig..
- Disconnect harness connector on window regulator control module → Fig..

◆ Installing

- Make sure that all clips -6- on rear side of door trim are clipped in. Replace damaged clips → Fig..
- Install door trim -1- in reverse order of removal.

2 - Bolt

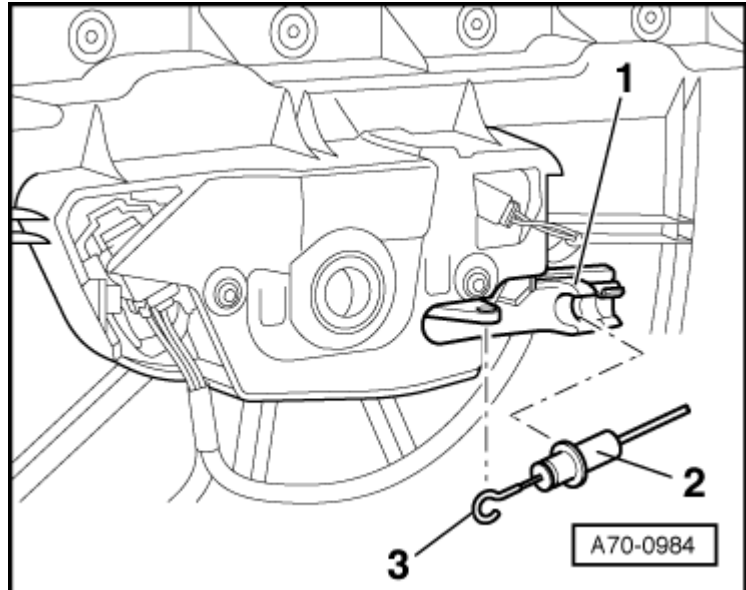
- Tightening torque: 4 Nm

3 - Trim panel

- 4 - Bolt
- Tightening torque: 4 Nm
- 5 - Hinged pocket with mount
- 6 - Clips (8x)
- 7 - Door shell

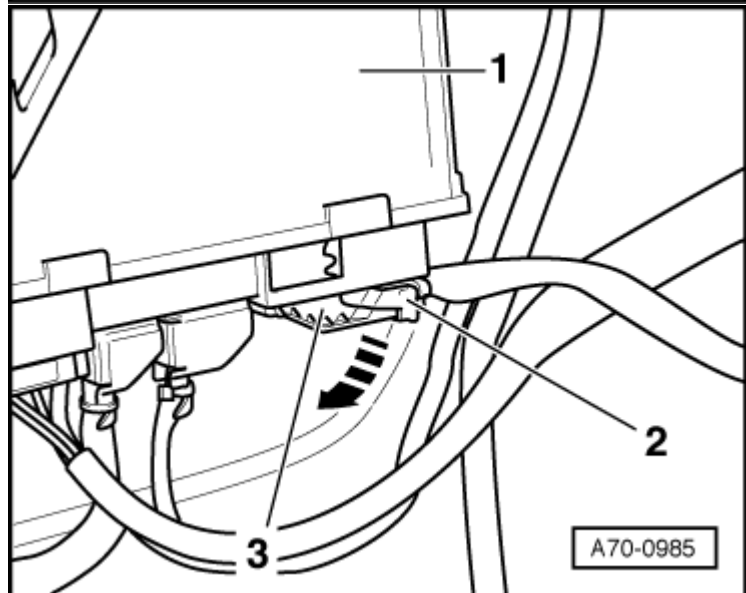
Disengaging release cable for interior door mechanism

- Pull release cable -2- from guide -1-.
- Disengage hook -3-.



Harness connector to window regulator control module

- Open securing clip -2- and disconnect connector -3- in direction of -arrow- from control module -1-.



Securing clip for door trim

- Press catches -2- and pull out clip -1- in -direction of arrow-.

