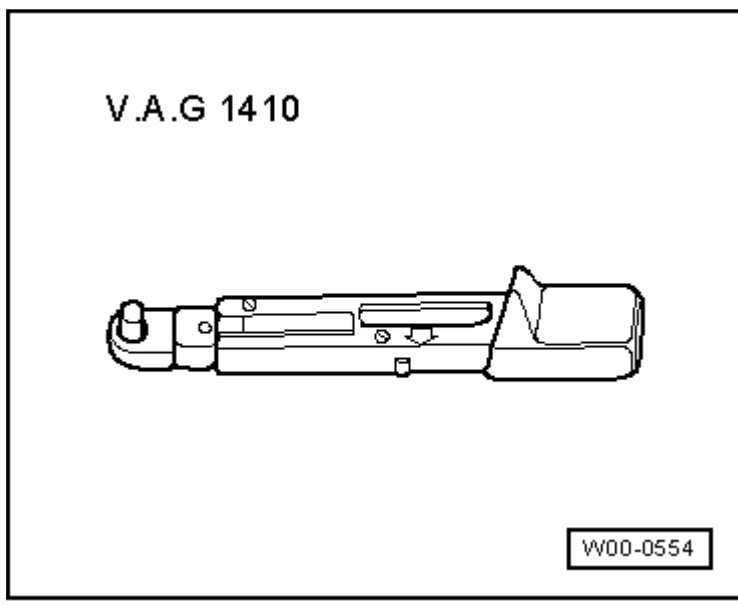


Removing and installing front door trim

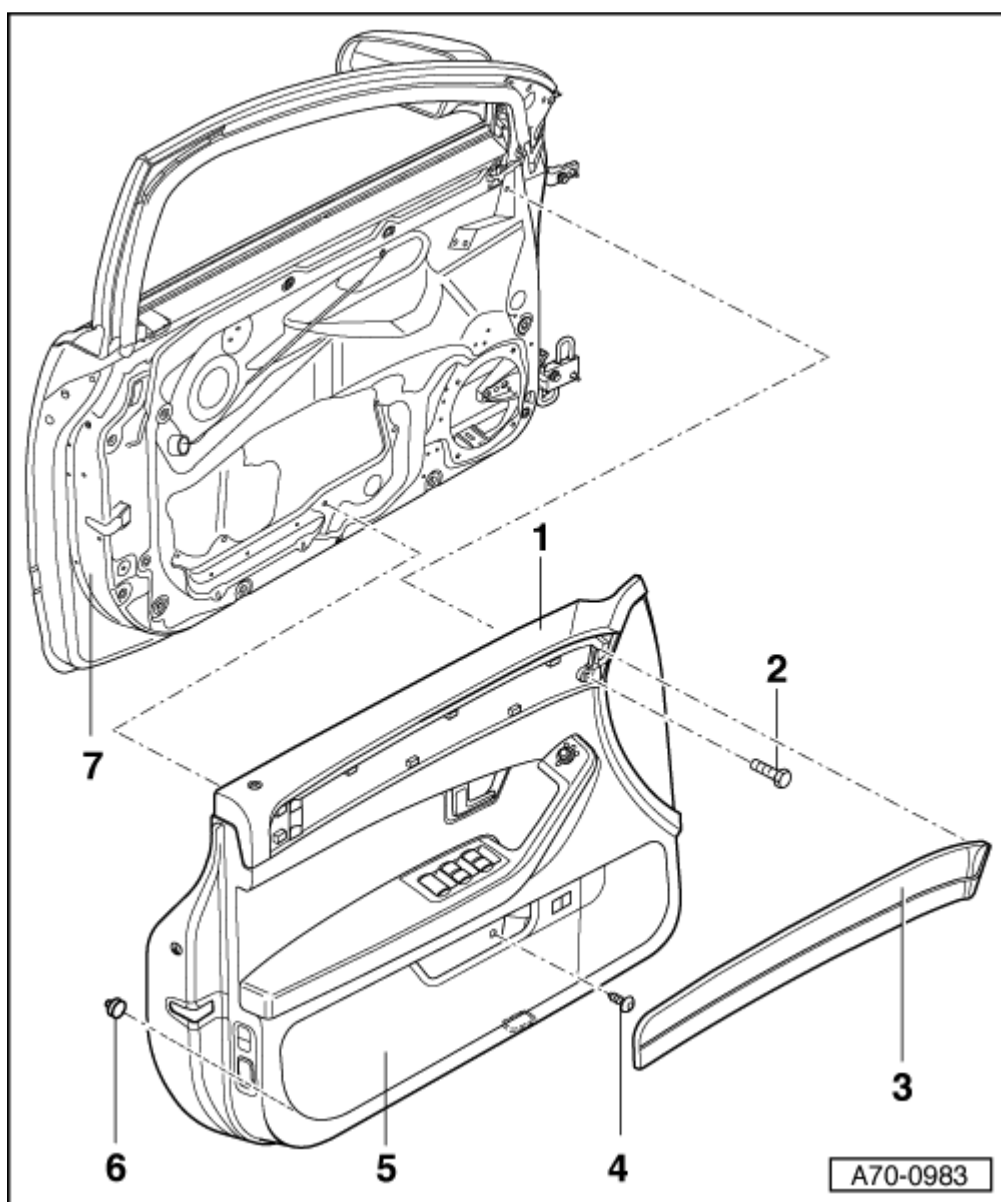
Special tools and workshop equipment required

- ◆ Torque wrench -V.A.G 1410-



1 - Door trim

- ◆ Removing
 - Remove the trim panel -3- → Chapter.
 - Unscrew the bolt -2-.
 - Close the hinged pocket -5-.
 - Unscrew the bolt -4-.
 - Starting at the bottom, unfasten the door trim -1- at the clips -6- (8x).
 - Disengage the Bowden cable for the interior door handle → Fig.
 - Unplug the connector at the window regulator control unit → Fig..
- ◆ Installing
 - Make sure all the clips -6- are in



position on the back of the door trim. Replace damaged clips → Fig.

- Install the door trim -1- in the reverse order of removal.

2 - Bolt

- Tightening torque 4 Nm.

3 - Trim panel

4 - Bolt

- Tightening torque 4 Nm.

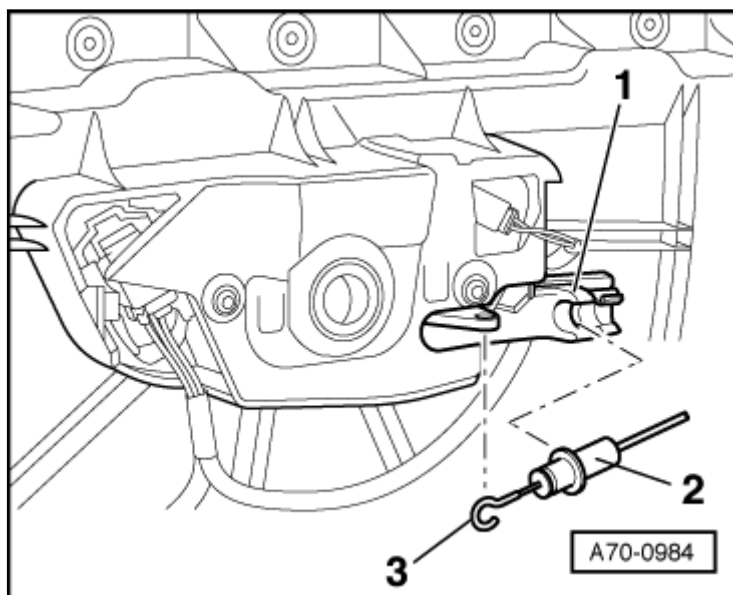
5 - Hinged pocket with mount

6 - Clips (8x)

7 - Door shell

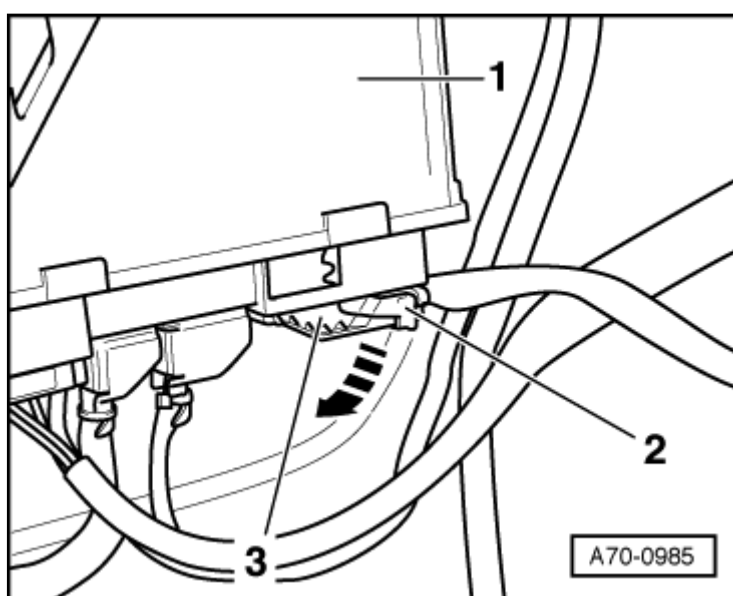
Disengaging Bowden cable for interior door handle

- Pull the Bowden cable -2- out of the guide -1-.
- Disengage the hook -3-.



Connector at window regulator control unit

- Unfasten the securing clip -2- and unplug the connector -3- in arrow direction from the control unit -1-.



Door trim securing clip

- Press the retainer tab -2- and pull out the clip -1- in arrow direction.

