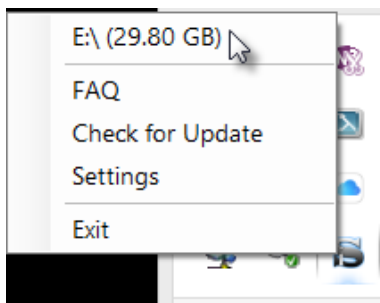


TRANSFERRING ITUNES PLAYLISTS (AND SONGS) TO SD FOR USE WITH MMI SD CARD SLOT

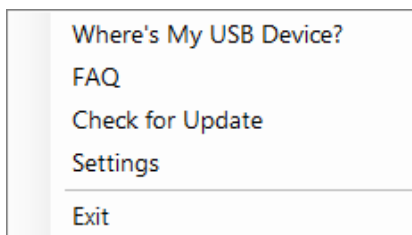
NOTE IN RESPECT OF SD CARDS: I have been unable to get the MMI (2015 3g Plus) to read SD cards larger than 32Gbyte.

NOTE IN RESPECT OF PLAYLIST NAMES: According to the MMI User's Manual, a playlist may not have the same name as a folder on the SD Card, i.e. you may not have a playlist named "Pink Floyd" if you have a folder named "Pink Floyd" containing your Pink Floyd mp3's. Playlists should therefore be named with this in mind. To overcome the issue, name the playlist in the example something like "Pink Floyd Songs" e.g.

- 1.1 Download and install the *iSyncr Windows Desktop* app on your PC/laptop which has the SD slot you will be using to transfer your playlists to. *iTunes* (containing the playlists you wish to transfer to the SD card) should be installed on the same laptop.
- 1.2 Right click on the *iSyncr* tray icon and click on the SD Card Drive letter:

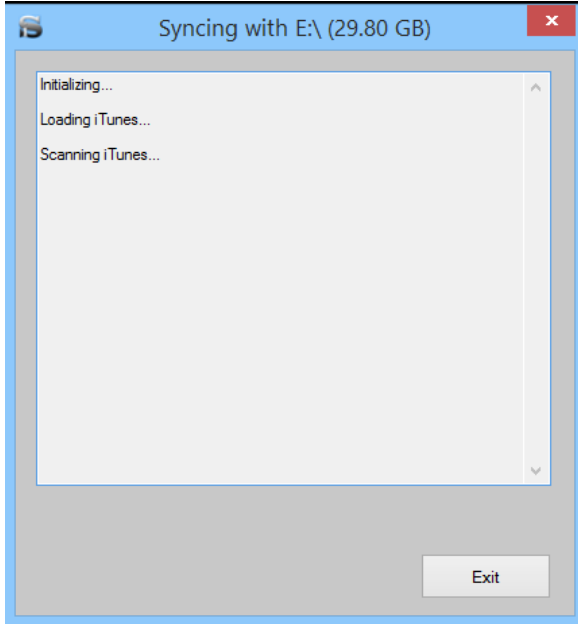


(If you do not see a drive letter when you right-click on the *iSyncr* tray icon, i.e. if it looks like this:

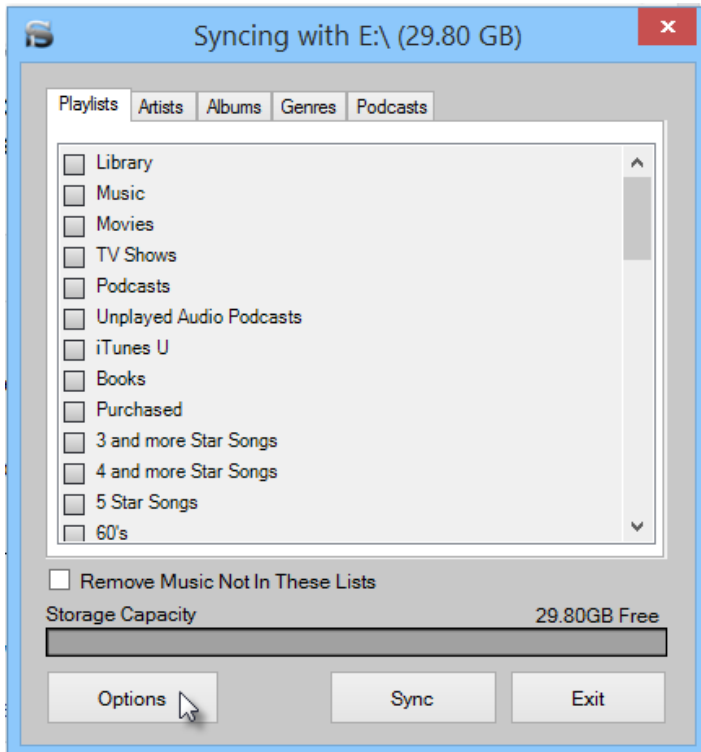


create an empty folder in the root of the SD Card to be used called "syncr". Remove the SD card from the laptop and re-insert it. After doing this, you should see the drive letter as shown above - *iSyncr* will probably open automatically in any event when the SD Card is inserted.

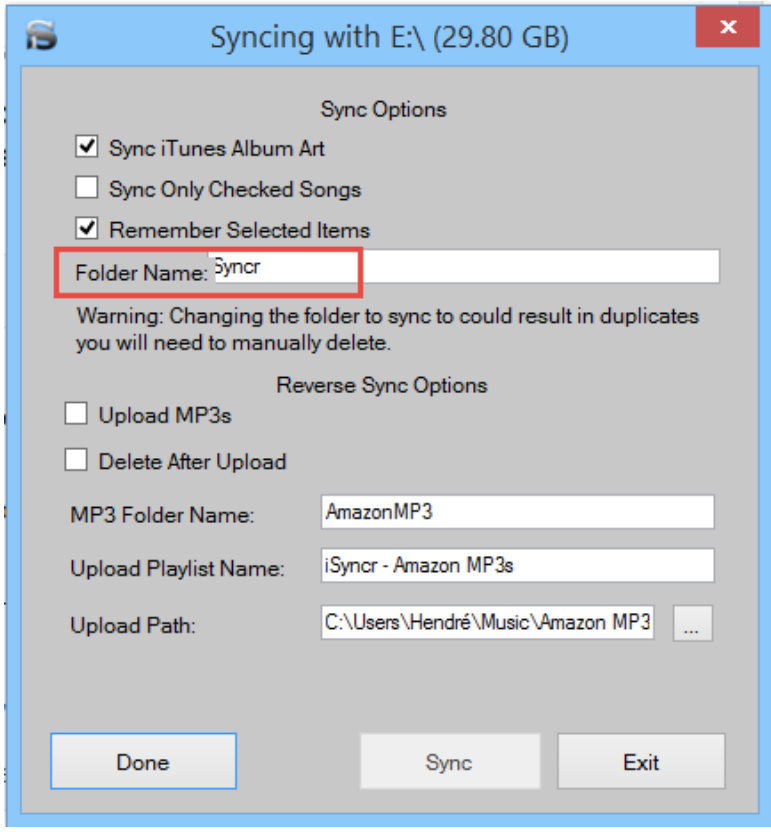
- 1.3 *iTunes* will open and *iSyncr* will read the *iTunes* library:



1.4 Once finished, your music library will be displayed. Click **Options**:



Clear the "Folder Name" field. This is done so that the playlists and music folders are created in the root of the SD Card. (The playlists have to be in the root to be playable in the MMI.).



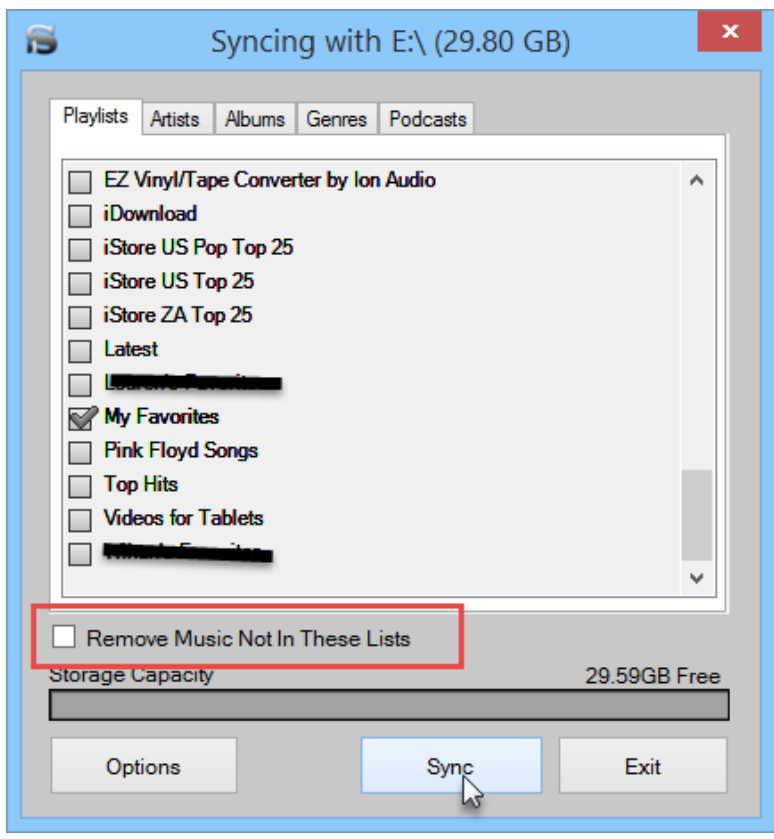
Remember that *iSyncr* defaults back to the “Syncr” folder once it has completed a sync – you therefore have to make this change before every new sync with *iSyncr*.

Click **Done**.

1.5 Select the playlists of which the music should be copied to the SD Card.

Select your preference in respect of the “Remove Music Not In These Lists” option.

Click **Sync**:



That is all there is to it. Browse the SD Card in Windows Explorer and check that the playlists (m3u files) were created in the root of the card.

Your playlists will show up on screen if you select the SD Card as the **Source** in the MMI. (If they do not show or do not work, it is probably because the playlists are not in the root of the SD Card. Make sure you cleared the folder to sync to as explained in step 1.4.)

(If you have video playlists in your *iTunes* library, the video files can be transferred to the SD Card in the same way. Remember however that the MMI is very particular about the format and bitrate of the video files it will play.)