

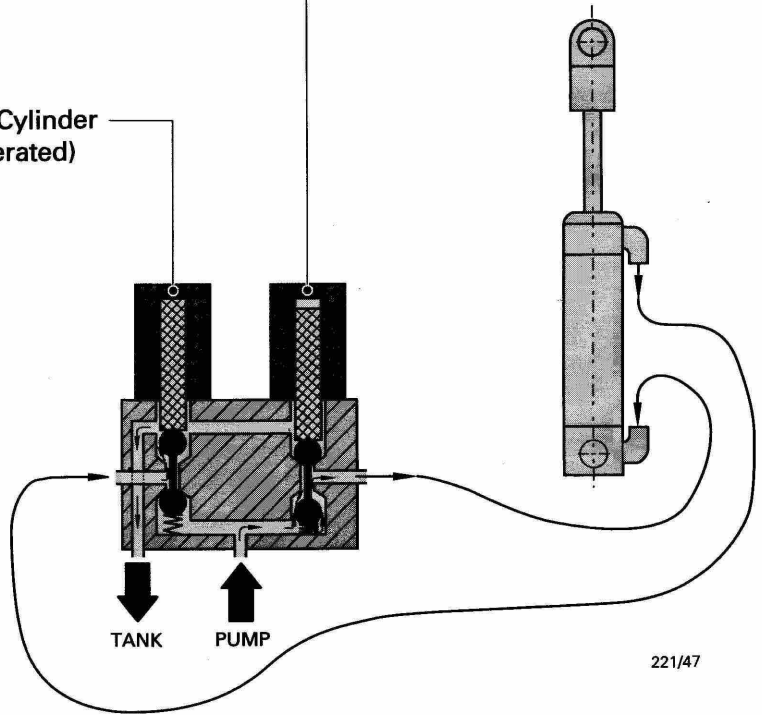
# Solenoid Valves

Two solenoid valves are provided for each function:

- I. Extend hydraulic cylinder
- II. Retract hydraulic cylinder

Valve I:  
Extend Cylinder  
(operated)

Valve II:  
Retract Cylinder  
(not operated)



Valve I:  
Extend Cylinder  
(not operated)

Valve II:  
Retract Cylinder  
(operated)

