



Audi

ETKA

| | | | | | | | |
|-------|------|----|----|--------------|-----|-------|------------|
| Model | Year | MG | SG | Illustration | UPD | 16:18 | 19.11.2013 |
| AQ5 | 2013 | 9 | 41 | 941-010 | 991 | | |

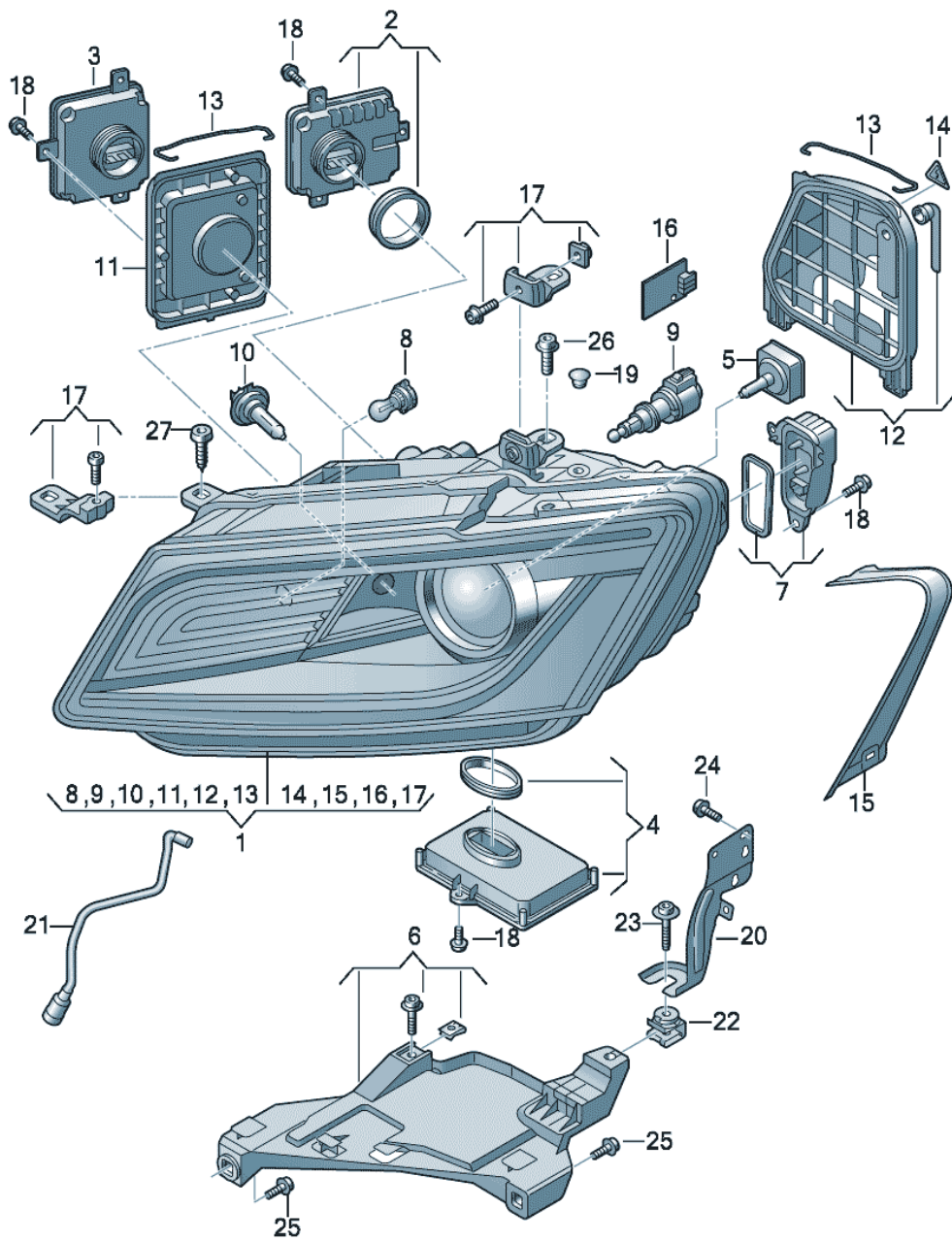
| Pos | Part Number | Name | Remark | Qty | Model |
|-----|---------------|--|------------|-----|----------------|
| | | headlamps for curve lighting | | | PR-8BP,8EH+8Q5 |
| 4 | 3D0 941 329 A | power module for cornering light and control unit for gas discharge bulb | | 2 | |
| 5 | N 107 218 01 | gas discharge bulb | D3S-42V35W | 2 | |
| 6 | 8R0 941 453 A | retaining plate | left | 1 | |
| (6) | 8R0 941 454 A | retaining plate | right | 1 | |
| 7 | 8R0 941 475 | led with heat sink D >> - 12.03.2013 | left | 1 | PR-AV1 |
| (7) | 8R0 941 475 A | led with heat sink D - 12.03.2013>> | left | 1 | PR-AV1 |
| (7) | 8R0 941 475 | led with heat sink D >> A 16.03.2013 D >> Y 27.05.2013 | left | 1 | PR-AV0 |
| (7) | 8R0 941 475 A | led with heat sink D A 16.03.2013>> D Y 27.05.2013>> | left | 1 | PR-AV0 |
| (7) | 8R0 941 476 | led with heat sink D >> - 12.03.2013 | right | 1 | PR-AV1 |
| (7) | 8R0 941 476 A | led with heat sink D - 12.03.2013>> | right | 1 | PR-AV1 |
| (7) | 8R0 941 476 | led with heat sink D >> A 16.03.2013 D >> Y 27.05.2013 | right | 1 | PR-AV0 |
| (7) | 8R0 941 476 A | led with heat sink D A 16.03.2013>> D Y 27.05.2013>> | right | 1 | PR-AV0 |



Audi

ETKA

| Model | Year | MG | SG | Illustration | UPD | 8:35 | 21.11.2013 |
|-------|------|----|----|--------------|-----|------|------------|
| AQ5 | 2013 | 9 | 41 | 941-005 | 993 | | |





Audi

ETKA

| | | | | | | | |
|-------|------|----|----|--------------|-----|------|------------|
| Model | Year | MG | SG | Illustration | UPD | 8:35 | 21.11.2013 |
| AQ5 | 2013 | 9 | 41 | 941-005 | 993 | | |

| Pos | Part Number | Name | Remark | Qty | Model |
|-----|---------------|---|--------|-----|------------------|
| | | headlamp for gas discharge bulb | | | PR-8BP, 8EH+ 8Q3 |
| 1 | 8R0 941 043 | headlamp for gas discharge bulb (right-hand traffic only) D >> - 12.03.2013 | left | 1 | PR-8BP |
| (1) | 8R0 941 043 C | headlamp for gas discharge bulb (right-hand traffic only) D - 12.03.2013>> | left | 1 | PR-8BP |
| (1) | 8R0 941 043 A | headlamp for gas discharge bulb (left-hand traffic only) D >> A 12.03.2013 D >> Y 27.05.2013 | left | 1 | PR-8BP |
| (1) | 8R0 941 043 D | headlamp for gas discharge bulb (left-hand traffic only) D A 12.03.2013>> D Y 27.05.2013>> | left | 1 | PR-8BP |
| (1) | 8R0 941 043 B | headlamp for gas discharge bulb D >> - 12.03.2013 | left | 1 | PR-8EH |
| (1) | 8R0 941 043 E | headlamp for gas discharge bulb D - 12.03.2013>> | left | 1 | PR-8EH |
| (1) | 8R0 941 044 | headlamp for gas discharge bulb (right-hand traffic only) D >> - 12.03.2013 | right | 1 | PR-8BP |
| (1) | 8R0 941 044 C | headlamp for gas discharge bulb (right-hand traffic only) D - 12.03.2013>> | right | 1 | PR-8BP |
| (1) | 8R0 941 044 A | headlamp for gas discharge bulb (left-hand traffic only) D >> A 12.03.2013 D >> Y 27.05.2013 | right | 1 | PR-8BP |
| (1) | 8R0 941 044 D | headlamp for gas discharge bulb (left-hand traffic only) D A 12.03.2013>> D Y 27.05.2013>> | right | 1 | PR-8BP |
| (1) | 8R0 941 044 B | headlamp for gas discharge bulb D >> - 12.03.2013 | right | 1 | PR-8EH |



Audi

ETKA

| | | | | | | | |
|-------|------|----|----|--------------|-----|------|------------|
| Model | Year | MG | SG | Illustration | UPD | 8:35 | 21.11.2013 |
| AQ5 | 2013 | 9 | 41 | 941-005 | 993 | | |

| Pos | Part Number | Name | Remark | Qty | Model |
|------|---------------|--|------------|-----|--------|
| (1) | 8R0 941 044 E | headlamp for gas discharge bulb D - 12.03.2013>> | right | 1 | PR-8EH |
| 2 | 8K0 941 597 B | ballast for gas discharge lamp | | 2 | |
| 3 | 4G0 907 697 D | power module for day driving lights | | 2 | |
| 4 | | power module for cornering light and control unit for gas discharge bulb not for this model | | | |
| 5 | N 107 218 01 | gas discharge bulb | D3S-42V35W | 2 | |
| 6 | 8R0 941 453 A | retaining plate | left | 1 | |
| (6) | 8R0 941 454 A | retaining plate | right | 1 | |
| 7 | 8R0 941 475 | led with heat sink D >> A 12.03.2013 D >> Y 27.05.2013 | left | 1 | |
| (7) | 8R0 941 475 A | led with heat sink D A 12.03.2013>> D Y 27.05.2013>> | left | 1 | |
| (7) | 8R0 941 476 | led with heat sink D >> A 12.03.2013 D >> Y 27.05.2013 | right | 1 | |
| (7) | 8R0 941 476 A | led with heat sink D A 12.03.2013>> D Y 27.05.2013>> | right | 1 | |
| 8 | N 107 331 01 | lamp carrier with bulb, yellow glass for turn signal | PSY24W | 2 | |
| 9 | 8R0 941 295 | range control adjustment motor | | 2 | |
| 10 | | halogen bulb not for this model | | | |
| 11 | 8R0 941 607 A | cap | | 2 | |
| 12 | 8R0 941 159 B | cap | left | 1 | |
| (12) | 8R0 941 158 B | cap | right | 1 | |
| 13 | 8R0 941 160 A | retaining spring | | 6 | |
| 14 | 8R0 010 560 | sticker 'achtung hochspannung' 'danger high voltage' 'attention ! haute tension' | | 2 | |
| 15 | 8R0 941 191 A | sealing frame | left | 1 | |



Audi

ETKA

| | | | | | | | | |
|-------|------|----|----|--------------|--|-----|------|------------|
| Model | Year | MG | SG | Illustration | | UPD | 8:35 | 21.11.2013 |
| AQ5 | 2013 | 9 | 41 | 941-005 | | 993 | | |

| Pos | Part Number | Name | Remark | Qty | Model |
|------|---------------|------------------------------------|--------|-----|--------|
| (15) | 8R0 941 192 A | sealing frame | right | 1 | |
| 16 | 8R0 905 353 | printed circuit trim for high beam | | 2 | |
| 17 | 8R0 998 121 A | repair kit for headlamp housing | | 2 | |
| 18 | N 107 086 01 | hexagon socket flat head bolt | 4X14 | X | |
| 19 | 4E0 941 041 | cap beam length adjustment | | 2 | PR-8EH |
| 20 | 8R0 941 355 | retaining plate | left | 1 | |
| (20) | 8R0 941 356 | retaining plate | right | 1 | |
| 21 | 8R0 941 717 | hose | left | 1 | |
| (21) | 8R0 941 718 | hose | right | 1 | |
| 22 | 4G8 806 305 | spacer | | 2 | |
| 23 | WHT 000 372 | hexagon socket head bolt (combi) | M6X40 | 2 | |
| 24 | N 107 511 01 | oval hexagon socket head bolt | M6X20 | 4 | |
| 25 | N 911 235 01 | hex socket head collared bolt | 5X14 | 4 | |
| 26 | N 906 847 05 | hexagon socket head bolt (combi) | M6X20 | 2 | |
| 27 | N 911 182 01 | hexagon socket head panel bolt | 6X20 | 2 | |