

Q5

Truth in Engineering 



Model

2014 Q5

Engine/Trim: Premium plus 3.0 TFSI®

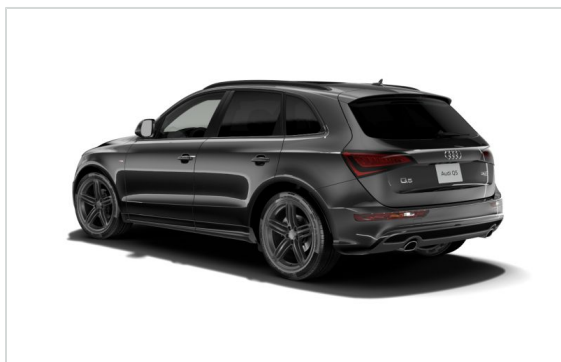
Drivetrain/Transmission: Eight-speed Tiptronic® transmission Audi quattro® all-wheel drive

Price as built:

\$49,250*

Price excludes tax, title and destination charges.

Exterior



Exterior Color

Phantom Black pearl

\$500

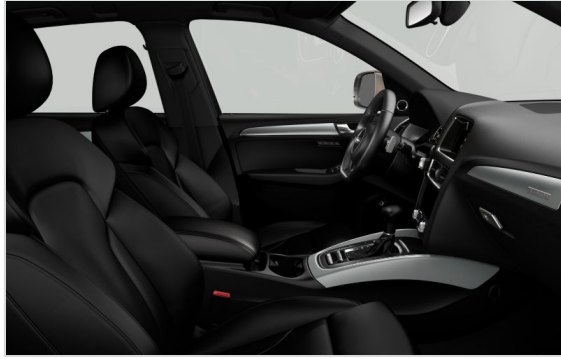


Wheels

Audi S line® plus package

\$3,000

Interior



Interior Color
Black leather seating surfaces

\$500



Decorative inlays
Audi S line® plus package

\$3,000

Packages & Options



Sport Interior package
Three-spoke multifunction steering wheel with shift paddles
Sport front seats
Four-way power lumbar adjustment for front seats

\$500

Audi S line® plus package
Brushed Aluminum inlay
Audi adaptive damping suspension
20" 5-segment-spoke design with Titanium finish wheels with 255/45 summer performance tires*
Black cloth headliner
Three-spoke multifunction flat-bottom sport steering wheel with shift paddles
Audi drive select

\$3,000



Bang & Olufsen® Sound System

\$850

Links

[Find a dealer](#) | [Inventory](#) | [Estimate Payment](#)

Standard Features

Safety | Security

- ▶ Driver and front passenger dual-stage airbags, front thorax side airbags and Sideguard® head curtain airbags¹

- ▶ Front passenger occupant detection—for airbags
 - ▶ Power central locking system with safety unlock feature if airbags deploy
 - ▶ Anti-lock Brake System (ABS) with Electronic Brake-pressure Distribution (EBD) and brake assist
 - ▶ Electronic Stability Control (ESC) with Off-road mode and traction control (ASR)
 - ▶ Anti-theft alarm system with immobilizer
 - ▶ Tire-pressure monitoring system
 - ▶ Safety belt reminder for driver and front passenger
 - ▶ Lower Anchors and Tethers for Children (LATCH) in rear seats
 - ▶ Electromechanical parking brake
-

Exterior

- ▶ Audi Singleframe® grille
 - ▶ Xenon plus headlights with LED daytime running lights
 - ▶ Automatic headlights
 - ▶ LED taillights
 - ▶ Power-adjustable, power-folding, auto-dimming, heated exterior side mirrors with memory
 - ▶ Front and rear fog lights
 - ▶ Headlight washing system
 - ▶ Flat-bottom dual exhaust outlets with polished tips
 - ▶ Aluminum trim around exterior windows
 - ▶ Aluminum roof rails
 - ▶ Power tailgate open/close
 - ▶ LED turn indicator lights in the side mirrors
 - ▶ Heated windshield washer nozzles
 - ▶ Audi S line® exterior appearance
-

Interior

- ▶ Three-zone automatic climate control
 - ▶ Four-spoke multifunction steering wheel
-

- ▶ Tilt and telescopic manually adjustable steering column
- ▶ Power windows with one-touch up/down operation and pinch protection
- ▶ Decorative interior inlays²
- ▶ Panoramic sunroof
- ▶ Dual front sun visors with lighted vanity mirrors
- ▶ Rear cargo cover, tilts when tailgate is opened
- ▶ Auto-dimming interior rear view mirror with digital compass
- ▶ Aluminum rear cargo load area and door sills

Seating

- ▶ Leather seating surfaces
- ▶ Eight-way power front seats and four-way power lumbar adjustment for driver
- ▶ Sliding 40/20/40 split folding rear seat with pass-through and adjustable recline
- ▶ Heated front seats
- ▶ Driver seat memory

Infotainment | Technology

- ▶ Audi concert radio with ten speakers and single CD player with MP3 playback capability
- ▶ Driver information system
- ▶ SiriusXM[®] Satellite Radio with 90-day trial subscription³
- ▶ Cruise control with coast, resume and accelerate features
- ▶ Audi music interface with iPod[®] integration
- ▶ BLUETOOTH[®] wireless technology preparation for mobile phone
- ▶ Garage door opener (HomeLink[®])
- ▶ Audi advanced key–keyless start, stop and entry⁴
- ▶ Rain/light sensor for automatic windshield wipers and headlights

Technical Specifications

Engineering | Performance

Engine type	Six-cylinder
Displacement (cc)/Bore and stroke (mm)	2,995/84.5 x 89.0
Horsepower (@ rpm)	272 @ 4,780
Torque (lb-ft @ rpm)	295 @ 2,150
Engine block	Aluminum alloy
Cylinder head	Aluminum alloy
Valvetrain	24-valve DOHC
Induction/Fuel injection	Supercharged/TFSI®
Acceleration (0-60 mph)	6.0 sec.
Top track speed	130 mph ⁵
Towing capacity (lb)	4,400 (maximum towing capacity) /440 (tongue weight)

Warranty | Maintenance

Warranty	4-Year/50,000 mile Audi New Vehicle Limited Warranty
Maintenance	12-Month/5,000 mile (whichever occurs first) NO CHARGE first scheduled maintenance

Exterior measurements

Wheelbase (in)	110.5
Length (in)	182.6
Height (in)	65.2
Overall width with mirrors (in)	82.2
Overall width without mirrors (in)	74.7
Track front (in)	63.7
Track rear (in)	63.5
Curb weight (lb)	NA
Drag coefficient (Cw)	.33

Interior measurements

Head room with sunroof (in, front)	39.4
Head room with sunroof (in, rear)	39.0
Head room (in, front)	38.1
Head room (in, rear)	37.7
Leg room (in, front)	41.0
Leg room (in, rear)	37.4
Shoulder room (in, front)	57.7

Shoulder room (in, rear)	56.4
Cargo volume (cu ft, cu ft, rear seatbacks up/folded)	29.1/57.3
Seating capacity	5

EPA estimates | Capacities

City	18 mpg ⁶
Highway	26 mpg ⁶
Combined	21 mpg ⁶
Engine oil (qt)	7.2
Fuel (gal)	19.8
Recommended fuel	Premium
Emissions rating	ULEV II

Disclaimers

1. Airbags are supplemental restraints only and will not deploy under all crash circumstances. Always use safety belts and seat children only in the rear, using restraint systems appropriate for their size and age.
2. Decorative inlay options will vary based on model and interior color combination. See your dealer for details.
3. SiriusXM Satellite Radio and SiriusXM Traffic sold separately or as a package after trial period. If you decide to continue your SiriusXM service at the end of your trial subscription, the plan you choose will automatically renew and bill at then-current rates until you call us at 1-866-635-2349 to cancel. See our Customer Agreement for complete terms at www.siriusxm.com. All fees and programming are subject to change. Sirius satellite service is available only to those at least 18 and older in the 48 contiguous USA, D.C., and PR (with coverage limitations). Our Internet radio service is available throughout our satellite service area and in AK and HI. © 2013 Sirius XM Radio Inc. Sirius, XM and all related marks and logos are trademarks of Sirius XM Radio Inc. All rights reserved. SiriusXM is not responsible for any errors or inaccuracies in the SiriusXM Traffic service or its use in the vehicle. For more information, visit siriusxm.com/traffic.
4. Some Audi models are equipped with a keyless ignition feature. The details as to how the system works can vary, and Audi owners should consult their owner's literature or an authorized Audi dealer if they have further questions about the operation of this feature. Please note that Audi warns against leaving the vehicle unattended with the engine running, particularly in enclosed spaces.
5. Top track speed electronically limited in the U.S. Always obey speed and traffic laws.
6. All fuel economy figures are EPA estimates unless otherwise noted. Your mileage will vary. See www.fueleconomy.gov for more information.

*Actual prices are set by the dealer. This site shall not be used or relied upon by you as a substitute for information that is available to you from an authorized Audi automobile dealer. MSRP excludes taxes, destination charges, optional equipment, registration, and dealer charges. All prices are in U.S. dollars. Specifications, equipment, options, and prices are subject to change without notice. Some items may be unavailable when vehicle is built. Emissions charges may vary by jurisdiction. .

** Based on Polk household methodology of conquest and defection data for the rolling 12-month period ending June, 2013, compared to same data for prior 10 years. © 2014 Audi of America, Inc. // Audi of America, Inc., believes the specifications on this site to be correct at the time of publishing. However, specifications, standard equipment, options, fabrics, and colors are subject to change without notice. Some equipment may be unavailable when your vehicle is built. Some vehicles are pictured with options that may be available at extra cost or may not be available on some models. Ask your dealer about availability of options and verify that your vehicle includes the equipment you ordered. Tires are supplied and warranted by their manufacturer. .

"Audi", all model names, "Audi connect", "e-tron", "FSI", "MMI", "quattro", "Sideguard", "Singleframe" and the Singleframe grille design, "S line", "S tronic", "TFSI" "Truth in Engineering", "ultra" and the four rings logo are registered trademarks of AUDI AG. "TDI" is a registered trademark of Volkswagen AG. "Bang & Olufsen" and "ICEpower" are registered trademarks of Bang & Olufsen. The BLUETOOTH word mark and logos are owned by the Bluetooth SIG, Inc., and use of any such marks by AUDI AG is under license. "BOSE" and "AudioPilot" are registered trademarks of the Bose Corporation. "Google", "Google Earth" and "Google Maps Street View" are trademarks of Google Inc. "HD Radio" and the HD Radio logo are proprietary trademarks of iBiquity Digital Corporation. "Home-Link" is a registered trademark of Johnson Controls Technology Company. "iPod" is a registered trademark of Apple Inc. "SiriusXM" and all related marks and logos are trademarks of SiriusXM Radio Inc. and its subsidiaries. "Tiptronic" is a registered trademark of Dr. Ing h.c. F. Porsche AG. All other trademarks are the property of their respective owners. .

A word about low aspect ratio and high performance tires High performance tires are designed for better performance and handling in warm climates. When driving in cold, snowy or icy weather, you should equip your vehicle with four all-season or winter tires, which offer better traction under those conditions. We suggest you use the Audi recommended winter or all-season tires specified for your Audi. High performance tires also have a lower aspect ratio that aids performance and handling. Driving over rough or damaged road surfaces, as well as debris, curbs and other obstacles can cause serious damage to wheels, tires, vehicle body and suspension parts. Be careful to avoid road hazards and reduce your speed, especially if your vehicle is equipped with low profile tires. Please also remember when making your selection that, while these tires deliver responsive handling, they may ride less comfortably and make more noise than others. Finally, these tires may wear more quickly than other choices. It is important that the inflation pressure is regularly checked and maintained at recommended levels. .