

Front Door and Door Component Carrier

1 - Hex Bolts (2x)

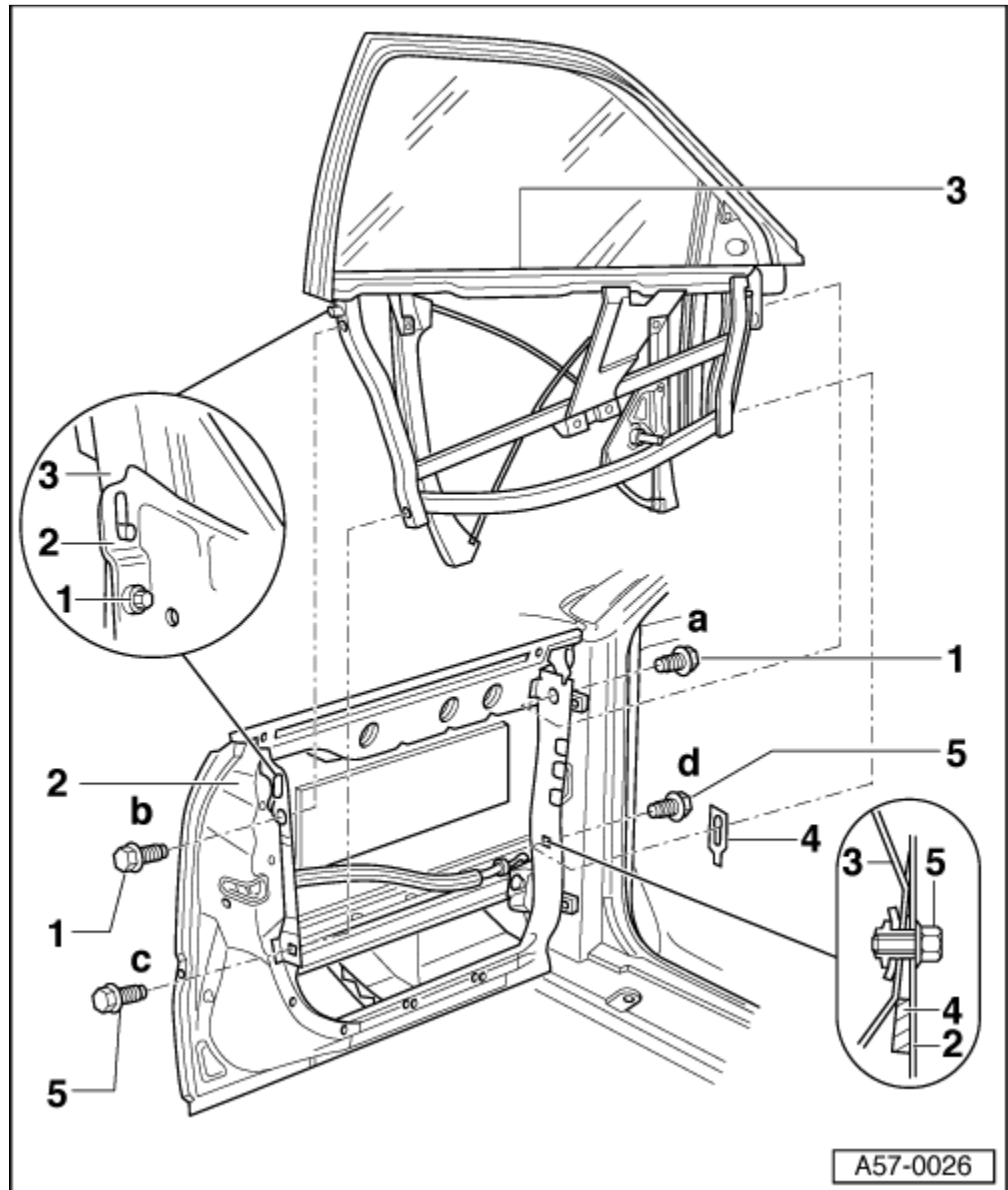
- 30 Nm.

2 - Front Door



Note

- ◆ The door component carrier does not have to be disassembled in order to remove the front door.
- ◆ Removing:
 - Remove front door trim. Refer to → [Body Interior; Rep. Gr.70](#).
 - Remove bottom section of A-pillar trim. → [Body Interior; Rep. Gr.70](#).
 - Disconnect vacuum line connectors at connection point on A-pillar.
 - Unclip rubber boot between front door and A-pillar, and pull wiring harness and central locking wiring harness out from A-pillar.



- Remove door component carrier → [Item](#).
- Unscrew bolts → [Item](#) and → [Item](#).
- Remove screws for upper door hinge → [Anchor](#).
- Remove screws for lower door hinge → [Anchor](#).

Installing:

- Install in reverse order of removal.

Adjusting:

- To adjust, refer to → [Chapter „Door Component Carrier, Adjusting“](#).

3 - Door Component Carrier

Removing:

- Remove door trim. Refer to → [Body Interior; Rep. Gr.70](#).
- Disconnect harness connectors and unclip from door component carrier.
- Remove bolts → [Item](#) and → [Item](#) and lift door component carrier upward and out.

Installing:

- Install in reverse order of removal.

**Caution**

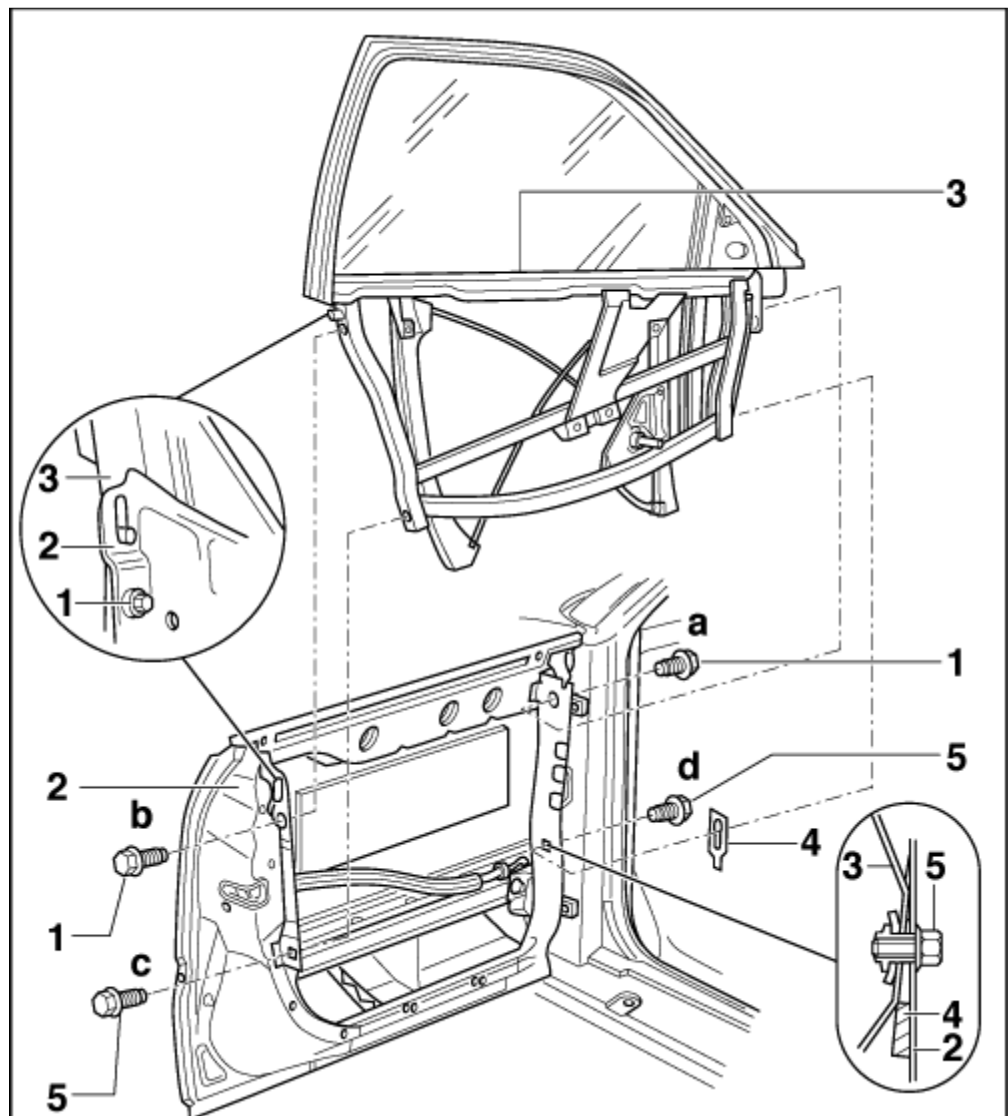
Bolts -1- and -5- must be tightened in the order -a-, -b-, -c-, then -d-.

Adjusting:

- Adjust via adjusting plate -4- → [Item](#).

**Note**

- ♦ *The rear door component carrier must be adjusted first, if it has not been already.*
- ♦ *Adjustment order: Rear door component carrier, trim post -B- and then front door component carrier.*



4 - Adjusting Plate**Note**

The adjusting plate must always be installed.

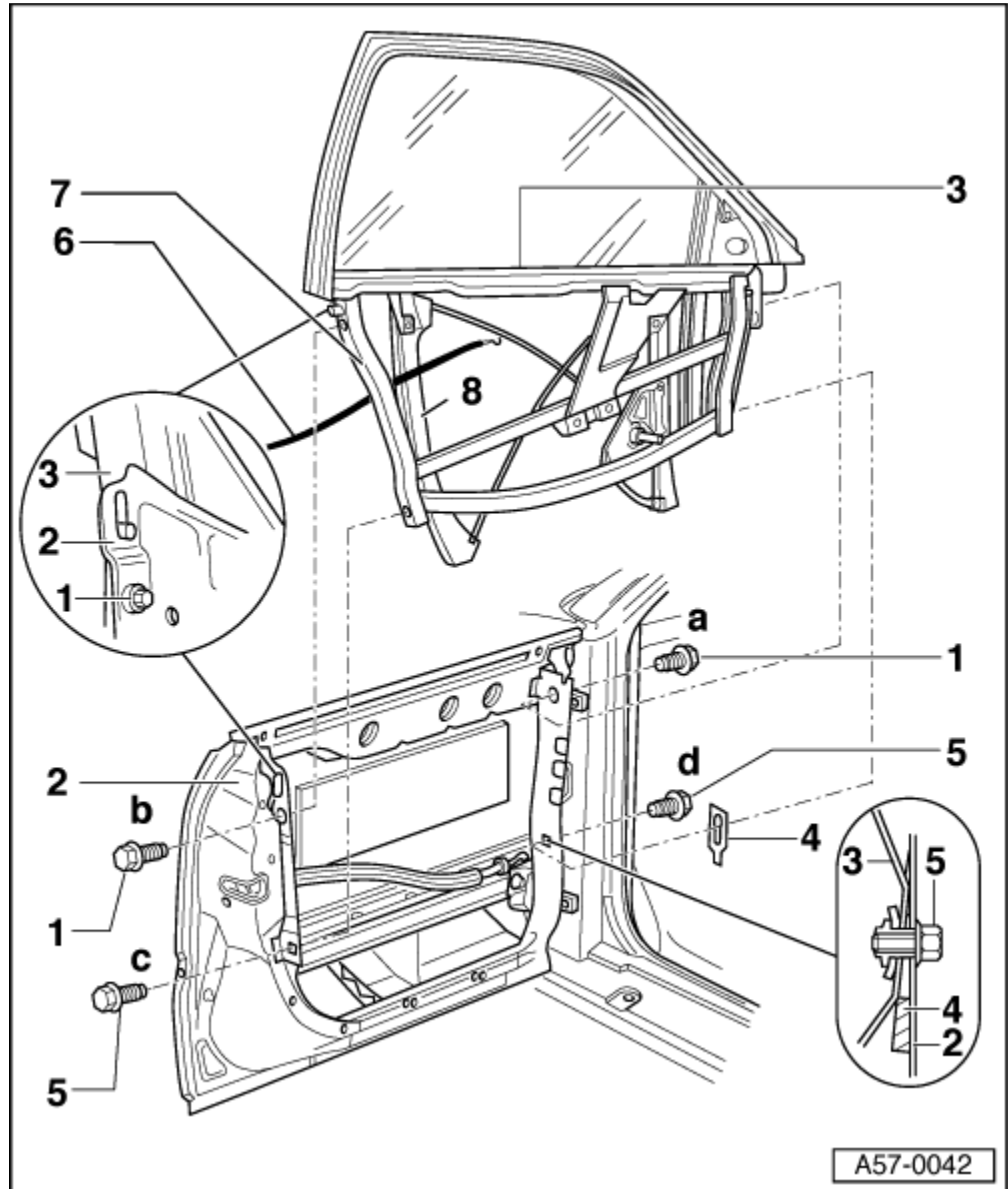
- Inclination of door at B-pillar can be adjusted by altering position of adjusting plate → Item .

5 - Bolts (2x)

- 30 Nm.

6 - Release Cable**Caution**

Route cable -6- exactly as shown in diagram (between carrier -7- and window guide -8-) in order to avoid malfunctions.

7 - Carrier**8 - Window Guide**

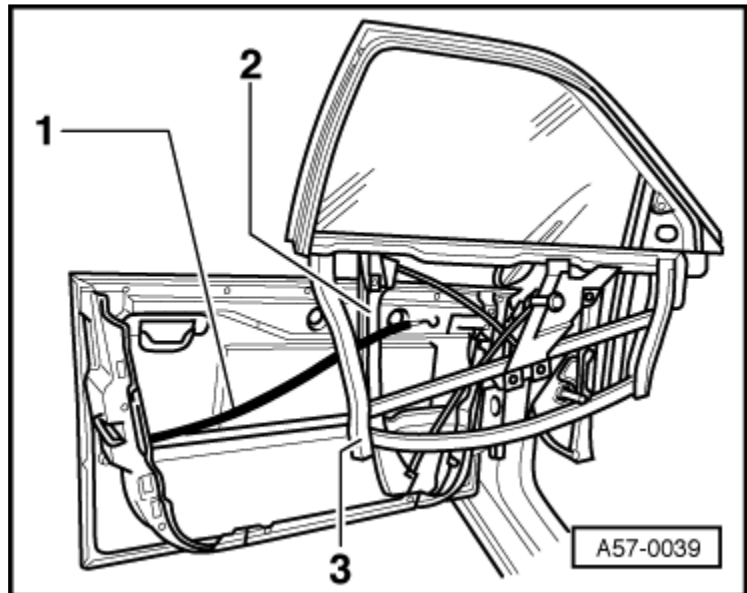
A57-0042

Release Cable Routing

- 1 - Release cable.
- 2 - Window guide.
- 3 - Carrier.

**Caution**

Route cable -1- exactly as shown in diagram (between carrier -3- and window guide -2-) in order to avoid malfunction.



Upper Door Hinge

- To remove door, remove bolt -4-.

Tightening torque: 30 Nm.

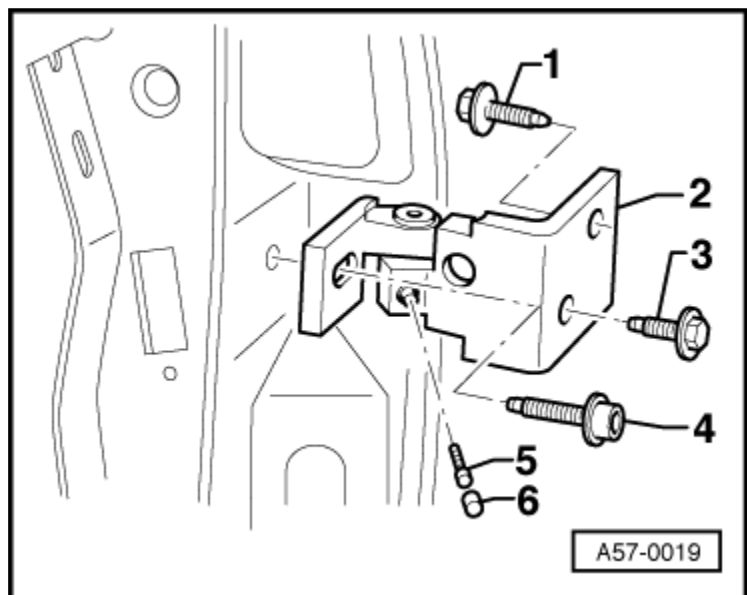


Note

Door hinge -2- can also be separated via bolt -5- (tightening torque: 23 Nm).

- To remove door hinge -2- also remove bolts -1- and -3-.

Tightening torque: 30 Nm.



Lower Door Hinge

- To remove door, remove bolts -4- and -6-.

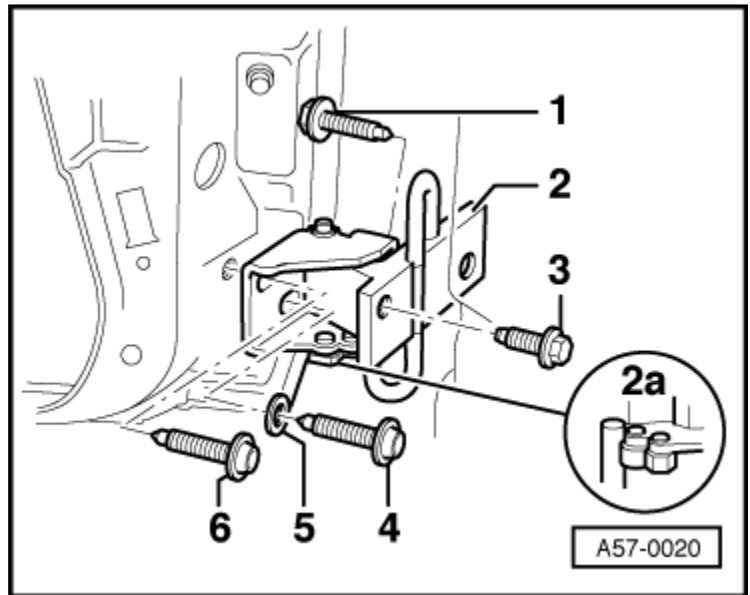
Tightening torque: 30 Nm.

- To remove the door hinge -2- also remove bolts -1- and -3-.

Tightening torque: 30 Nm.

- Grease at point -2a- using grease type -G 000 150-.

Removing and Installing Side Impact Bar



- To remove, remove bolt -5- (2x) and remove side impact bar -6-.

Tightening torque: 8 Nm.

