

Front Door Lock Operating Rods

1 - Securing Rod-Lock Cylinder

- Installing, refer to → [Anchor](#).

2 - Door Lock

- Removing and installing, refer to → [Chapter „Door Lock, from MY 1999 VIN 8D XA 200 001“](#).

3 - Door Handle

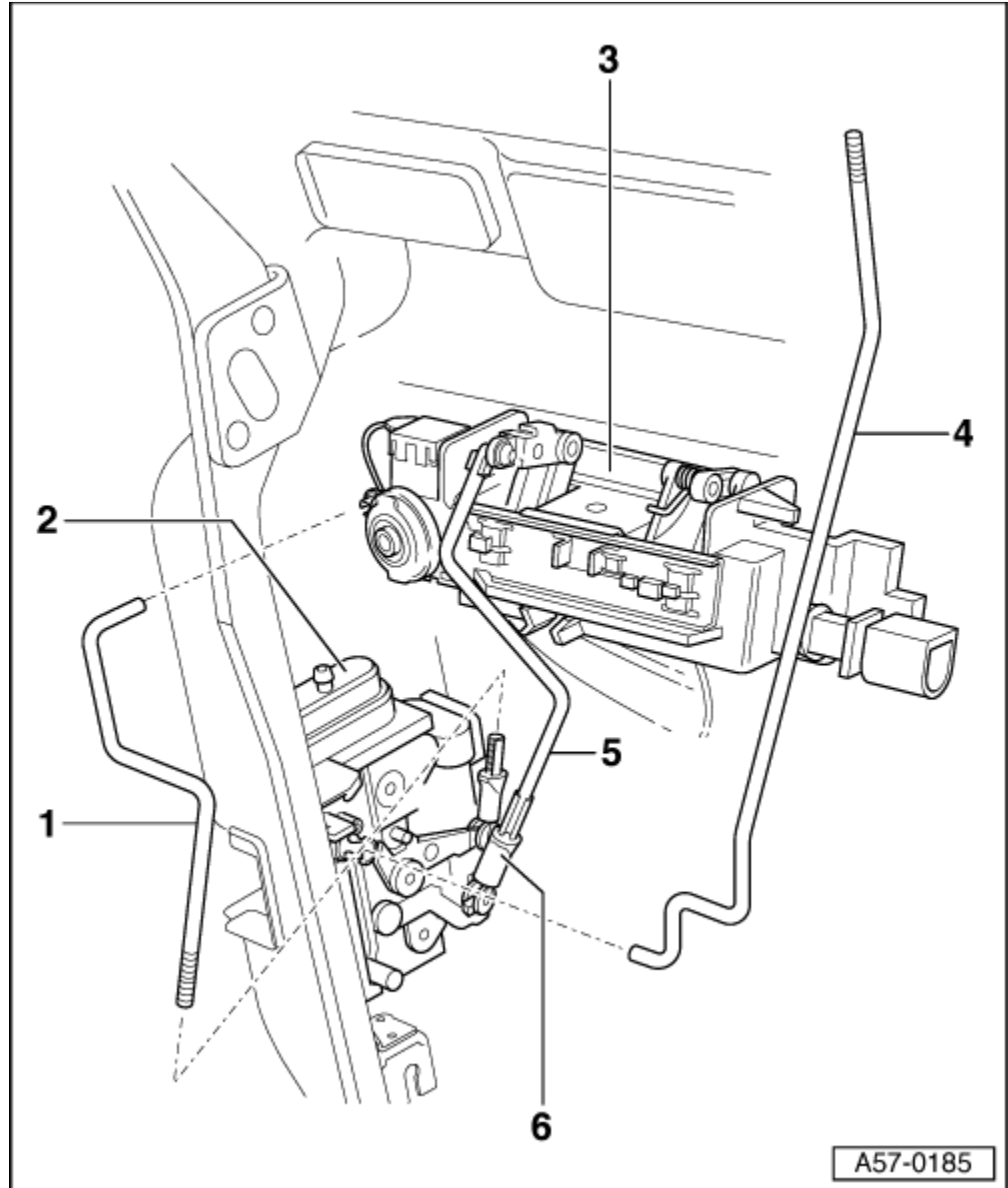
- When removing door handle, securing rod → [Item](#) and operating rod → [Item](#) must be disengaged at door handle.

4 - Operating Rod

- To remove, unclip at door lock.

5 - Operating Clip

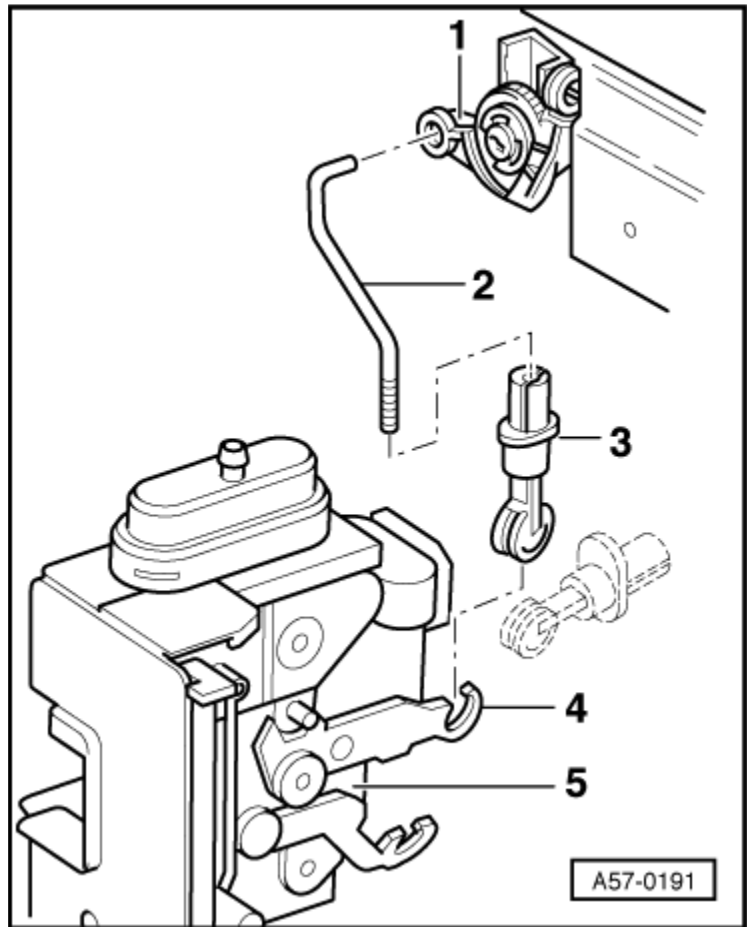
- Installing, refer to → [Anchor](#).



Removing and Installing Securing Rod for Lock Cylinder

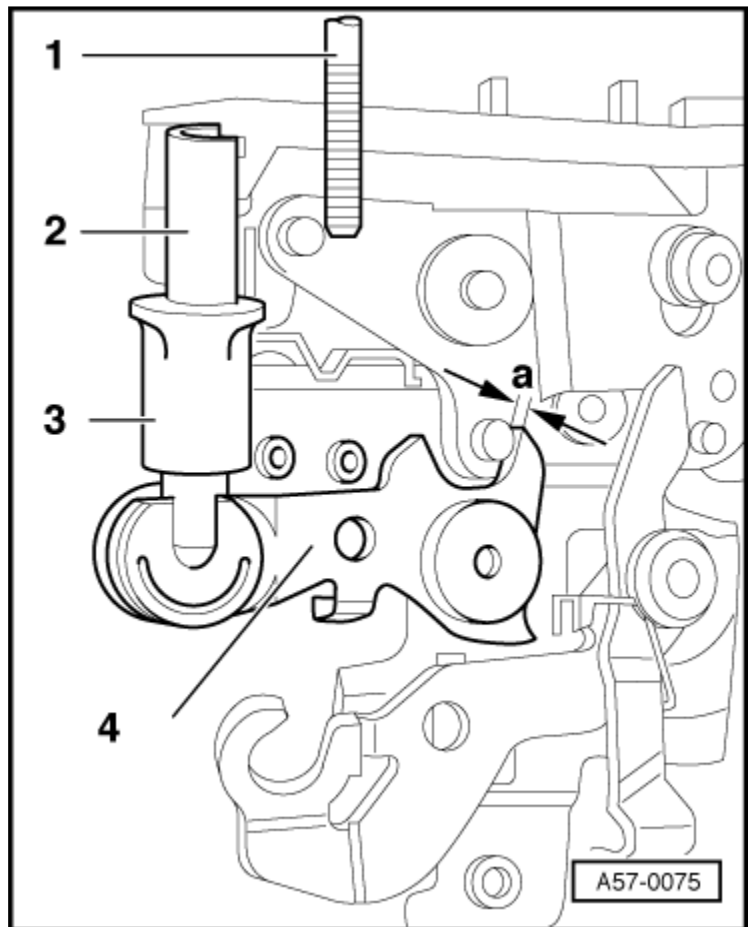
- Insert securing rod -2- for lock cylinder into socket at release lever -1- and snap into place.
- Tilt operating clip -3- 90° (not shown), insert into door lock release lever -4- and tilt back upward.
- Clip securing rod -2- into operating clip -3-.
- Do not bend locking lever -4- at door lock -5- (maximum play at locking lever 1 mm → [Anchor](#)).

- Slide up casing on operating clip -3-.



Adjusting Locking Lever Play

- Insert securing rod -1- into operating clip -2- so that dimension -a- at locking lever -4- is approximately 1 mm.
- During this, dimension -a- = 13 mm (adjustment depth for securing rod) must be maintained → **Anchor**.



Adjustment Depth For Securing Rod

- Dimension -a- of securing rod -1- must be $13 \text{ mm} \pm 3 \text{ mm}$ when properly adjusted.
- After adjusting correctly, slide casing -2- from operating clip -3- upward.

