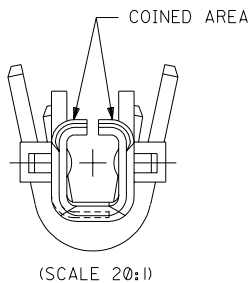
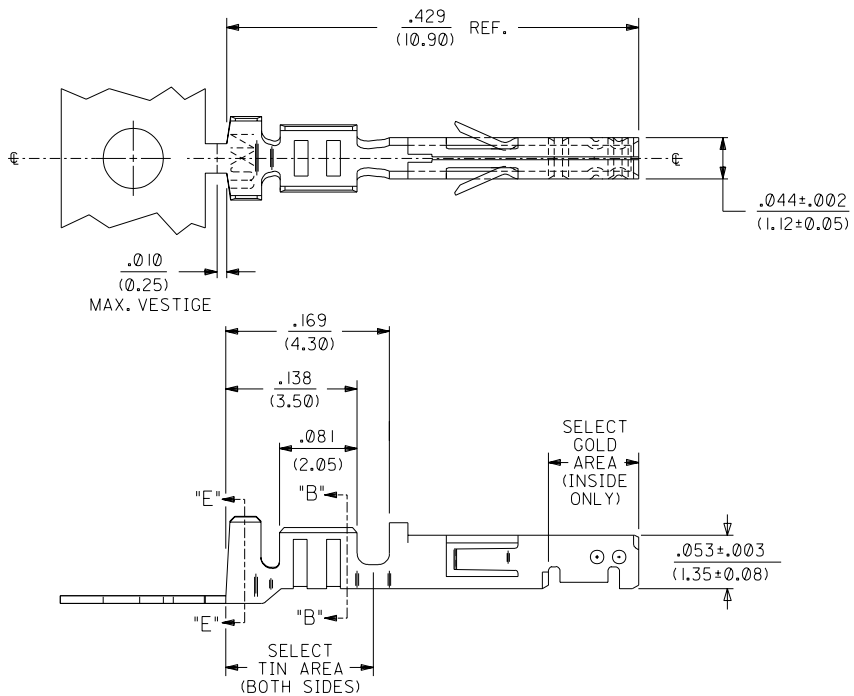
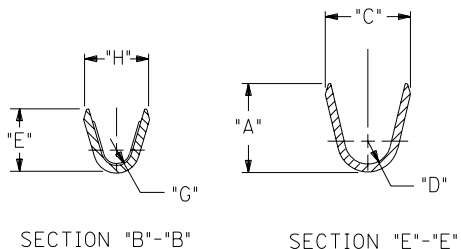


13	12	11	10	9	8	7	6	5	4	3	2	1
AWG:	MAX. INSULATION	"A" ±.012 (±0.30)	"C" ±.012 (±0.30)	"D" ±.005 (±0.13)	"E" ±.012 (±0.30)	"G" ±.005 (±0.13)	"H" ±.012 (±0.30)					
20-24	.073/(1.85)	.090/(2.29)	.100/(2.54)	.030/(0.76)	.075/(1.91)	.025/(0.64)	.082/(2.08)					
26-30	.050/(1.27)	.075/(1.91)	.083/(2.10)	.025/(0.64)	.058/(1.47)	.020/(0.51)	.065/(1.65)					

43030			
MATERIAL NUMBER	PLATING	WIRE SIZE	FORM
43030-0001	A	20-24	CHAIN
43030-0002	B	20-24	CHAIN
43030-0003	C	20-24	CHAIN
43030-0004	A	26-30	CHAIN
43030-0005	B	26-30	CHAIN
43030-0006	C	26-30	CHAIN
43030-0007	A	20-24	LOOSE
43030-0008	B	20-24	LOOSE
43030-0009	C	20-24	LOOSE
43030-0010	A	26-30	LOOSE
43030-0011	B	26-30	LOOSE
43030-0012	C	26-30	LOOSE



NOTES:

- MATERIAL: PHOSPHOR BRONZE ALLOY
- TERMINAL PLATING:
 - "A"- .000040/(0.0010) MIN TIN PLATE
 - "B"- .000015/(0.00038)MIN. GOLD PLATE IN SELECT AREA AND .000050/(0.0013) MIN. TIN/LEAD PLATE (90/10) SELECT AREA WITH MATTE FINISH OVER .000050/(0.0013) MIN. NICKEL OVER-ALL.
 - "C"- .000030/(0.00076)MIN. GOLD PLATE IN SELECT AREA AND .000050/(0.0013) MIN. TIN/LEAD PLATE (90/10) SELECT AREA WITH MATTE FINISH OVER .000050/(0.0013) MIN. NICKEL OVER-ALL.
- PRODUCT SPECIFICATION : PS-43045
- TERMINAL FOR USE IN MICRO FIT RECEPTACLE #43025-****.
- FOR TERMINAL ORIENTATION IN RECEPTACLE SEE DRAWING* SDA-43025.
- THIS TERMINAL IS DESIGNED IN METRIC.

DEL FORM OPTION EC NO. UCP2003-0372 DRAWN: MUELLER 02/08/28 CHK: MUELLER 02/08/28 APPR: MARGULIS 02/08/28	QUALITY SYMBOLS	GENERAL TOLERANCES: (UNLESS SPECIFIED)	SCALE : <input type="checkbox"/> mm <input checked="" type="checkbox"/> INCH	DESIGN UNITS <input checked="" type="checkbox"/> mm <input type="checkbox"/> INCH	DIMENSIONS: <input type="checkbox"/> mm <input type="checkbox"/> INCH <input type="checkbox"/> mm ONLY	SHT	REV
	MAJOR $\nabla=0$	mm	INCH	DRAWN BY & DATE MUELLER 02/08/13	THIRD ANGLE PROJECTION		REVISE ON CAD ONLY
	CRITICAL $\nabla=0$	4 PLACES ±0.	±.	CHECKED BY & DATE MUELLER 02/08/13	TITLE: MICRO FIT (3.0) FEMALE CRIMP TERMINAL		
		2 PLACES ±0.25	±.014	APPROVED BY & DATE MARGULIS 02/08/13	MOLEX MOLEX INCORPORATED		
REV		1 PLACE ±0.35	±.	CAD FILENAME	MATERIAL NO. SEE CHART	DRAWING NO. SD-43030-001	SHEET NO. 1 OF 1
K		ANGULAR: ±5 °			THIS DRAWING CONTAINS INFORMATION THAT IS PROPRIETARY TO MOLEX INCORPORATED AND SHOULD NOT BE USED WITHOUT WRITTEN PERMISSION.		SIZE C